

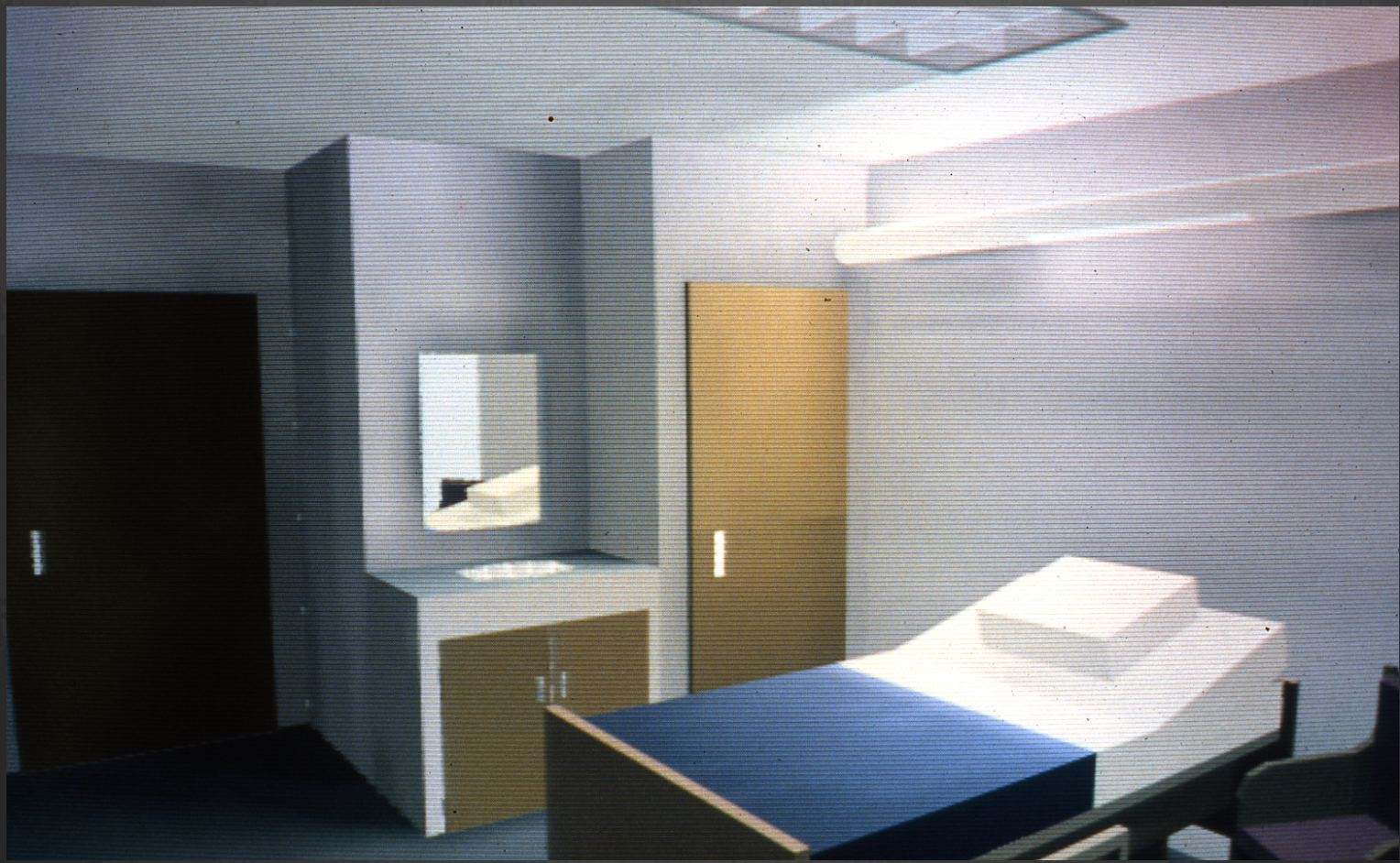
In the beginning....

Adopting Radiance... friends since 1989

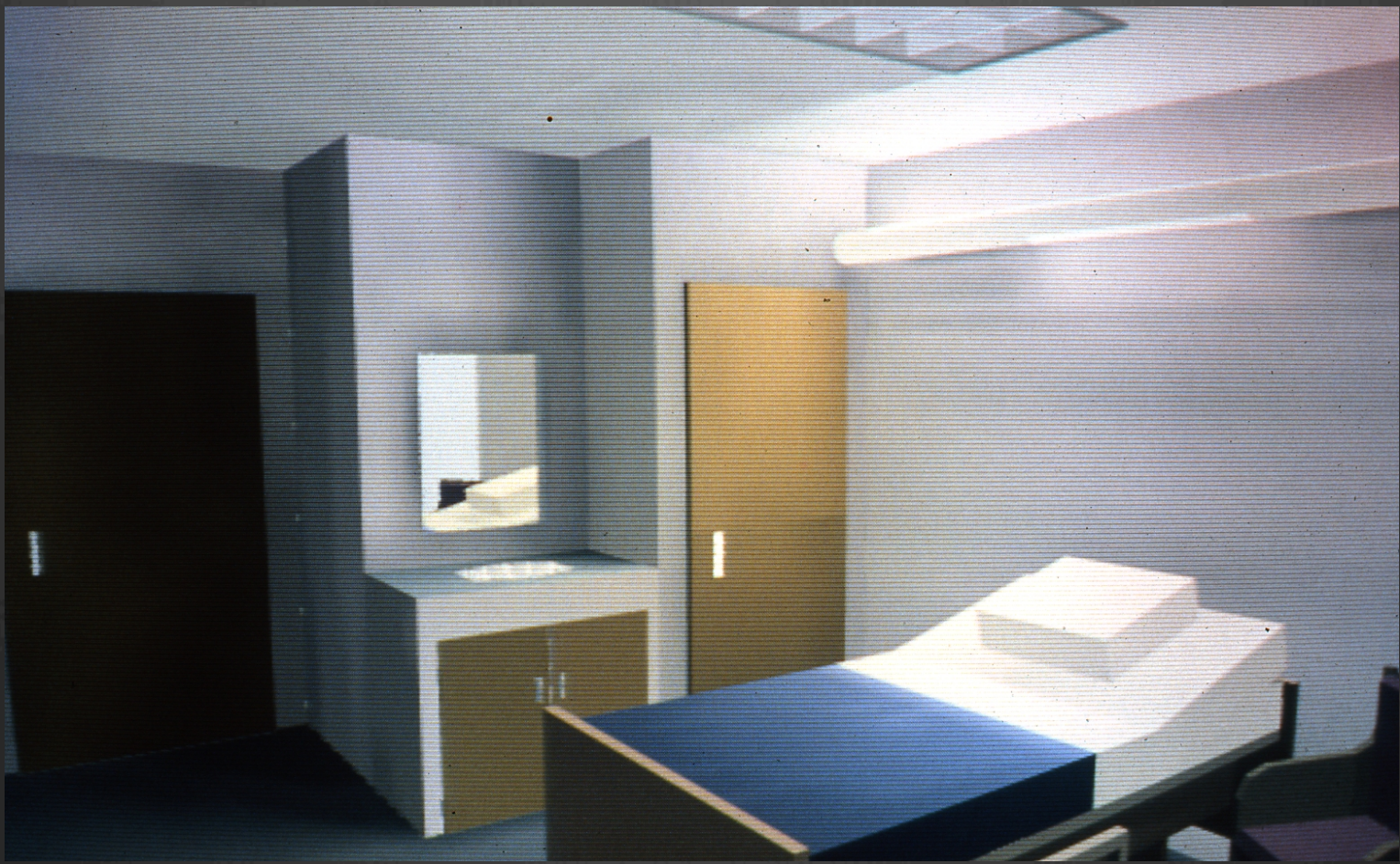
by

Rob Shakespeare

17th International Radiance Workshop



In 1989 I saw this image in LD&A (Peter Ngai)... It inspired me to explore how emerging lighting visualization could assist my art.

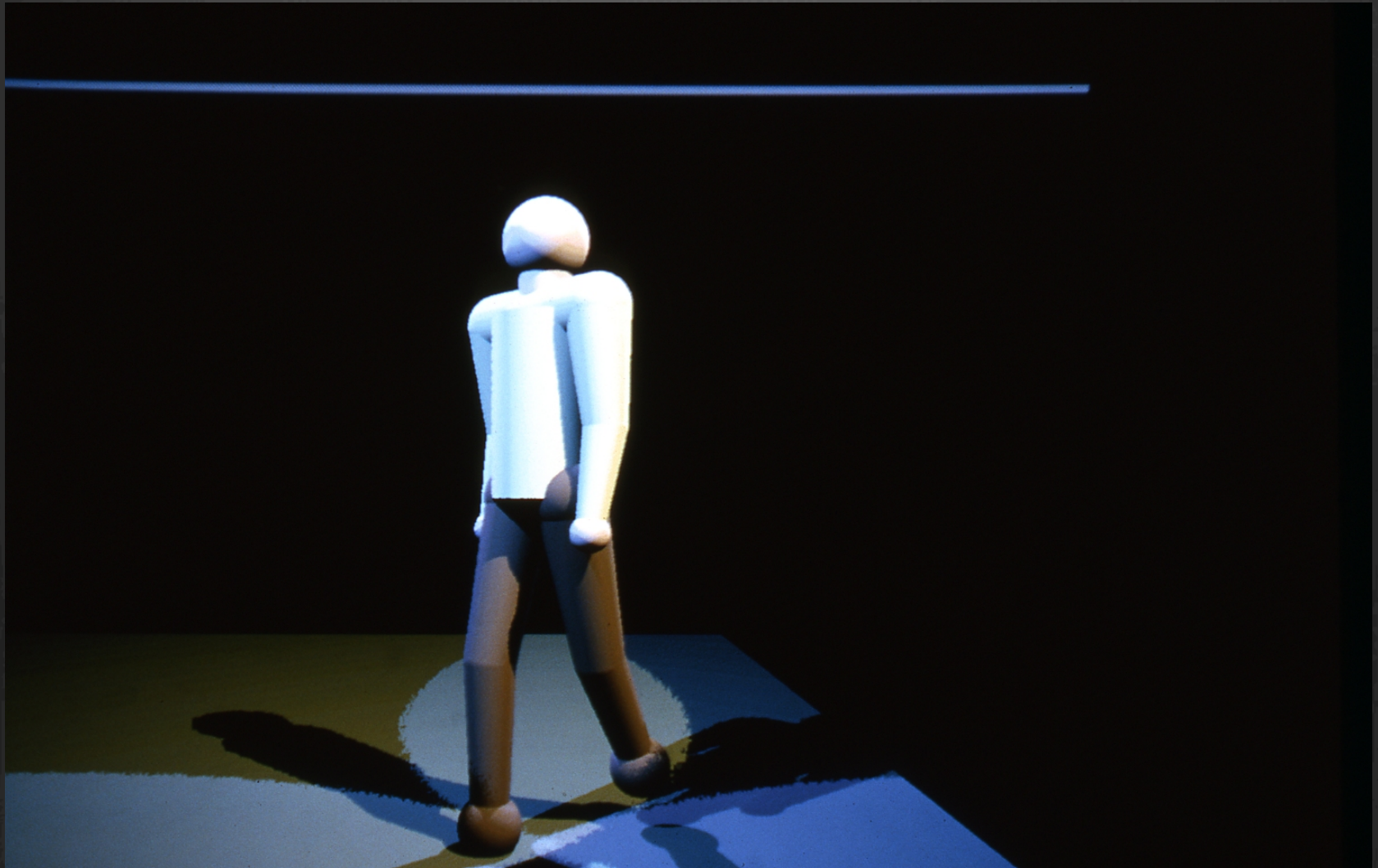


His software was proprietary at PEERLESS Lighting,
But he generously introduced me to Greg Ward...

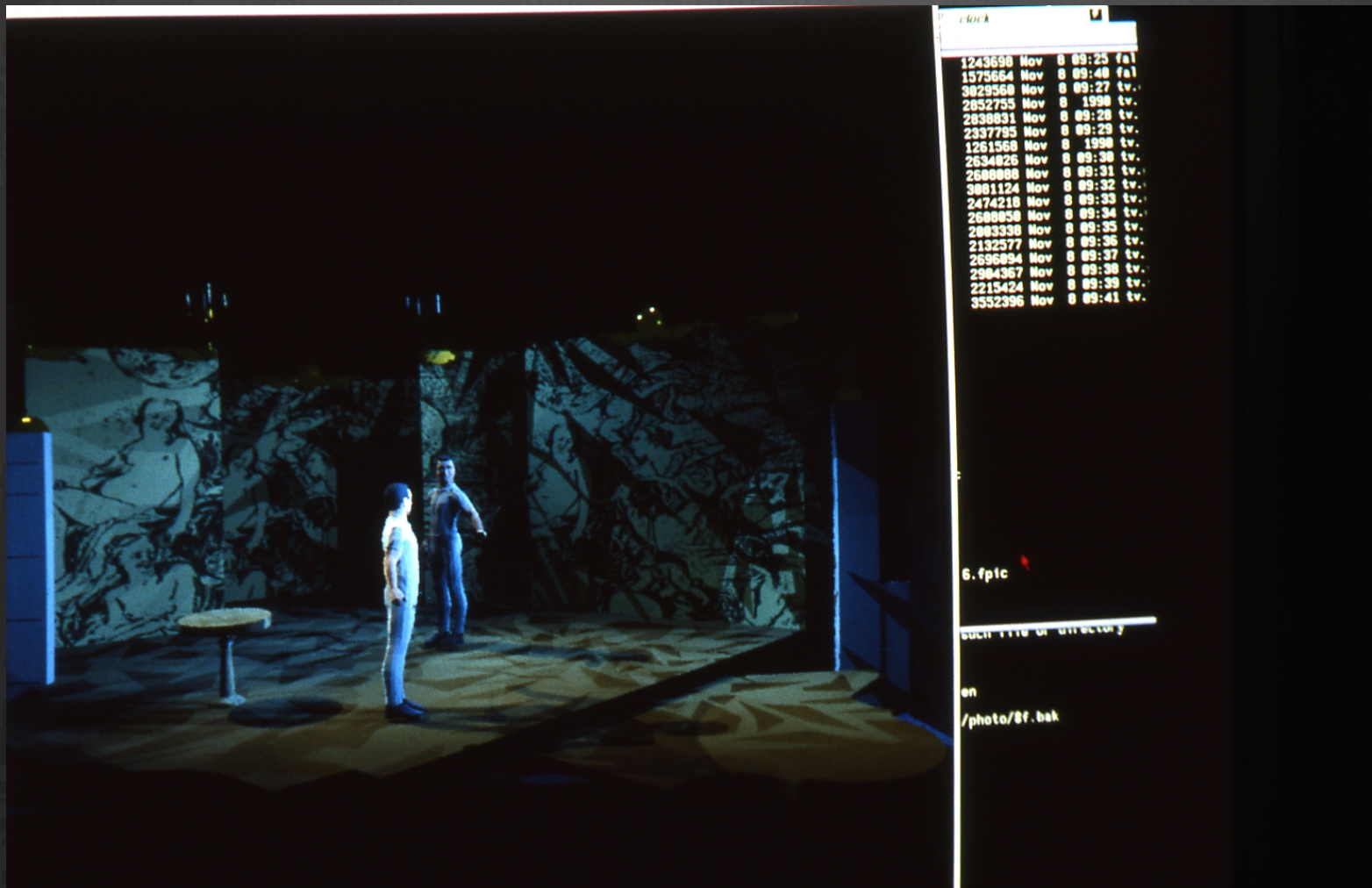


His software was proprietary at PEERLESS Lighting,
But he generously introduced me to Greg Ward.



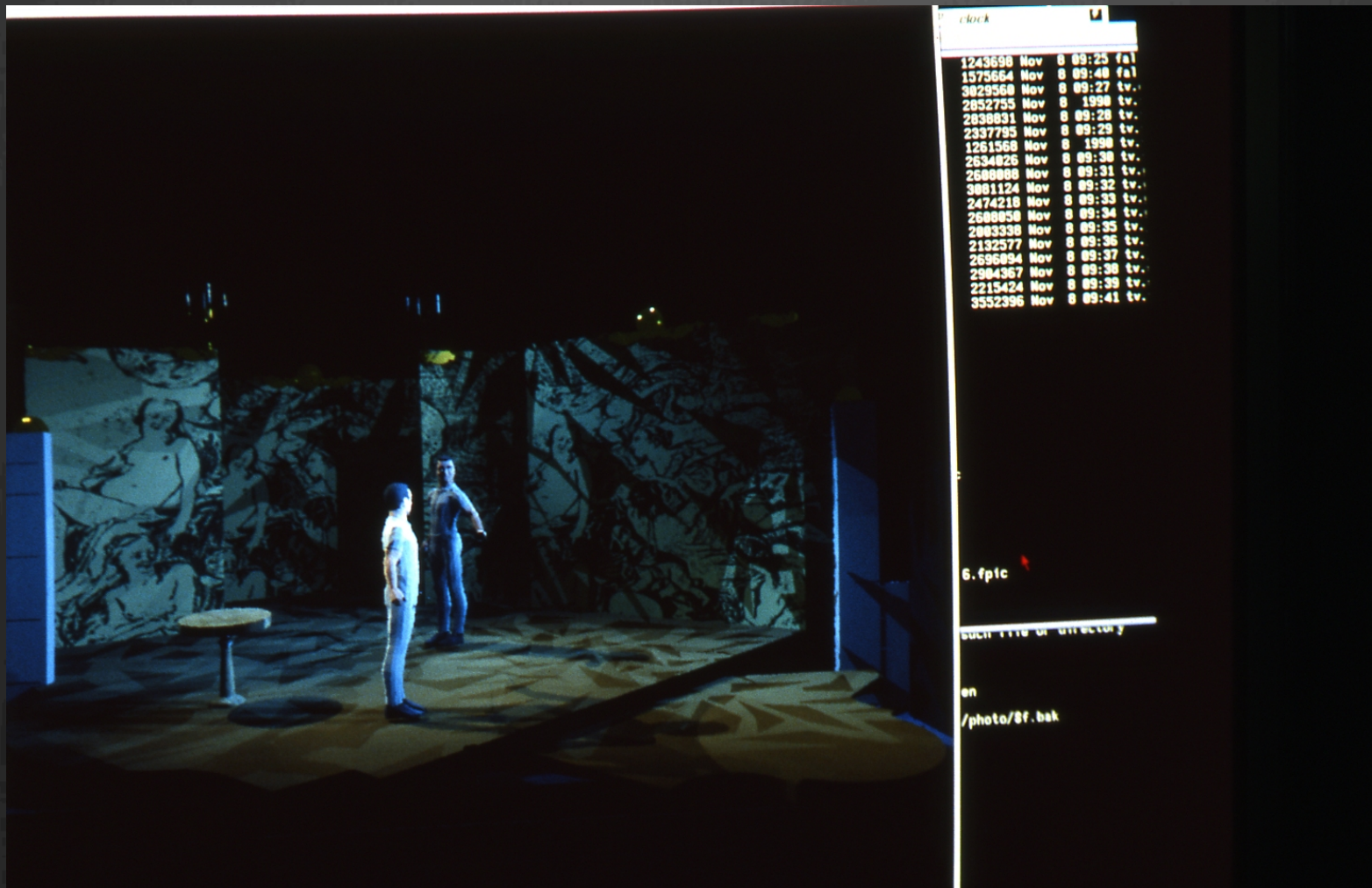


I think this is Greg's model, but it served me well in the beginning as I explored Radiance and Theatre Lighting .. there was something valuable in this.

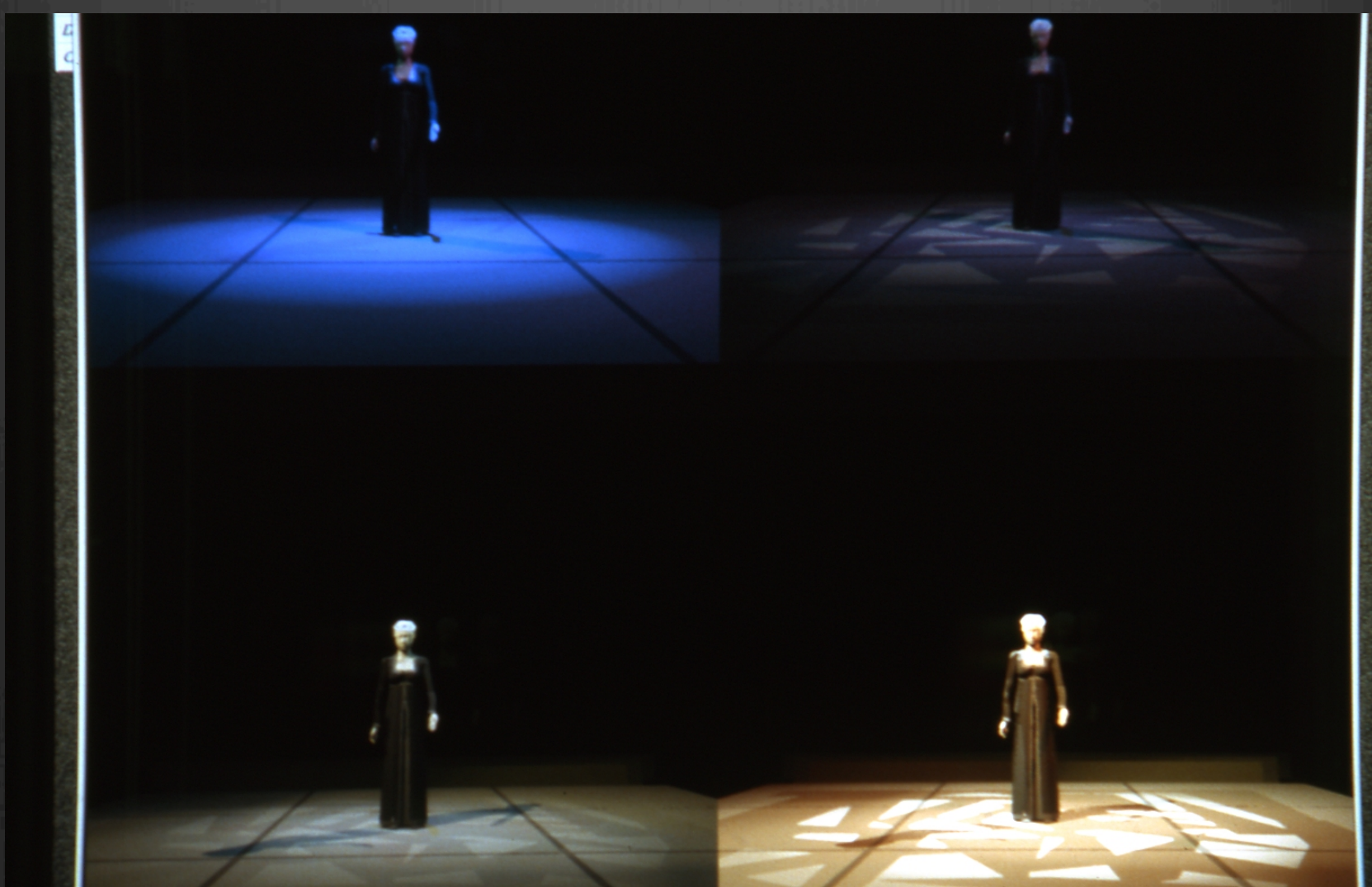


Concept image for *Les Liasions Dangereuses*, 1990, with borrowed actors (too expensive to purchase).

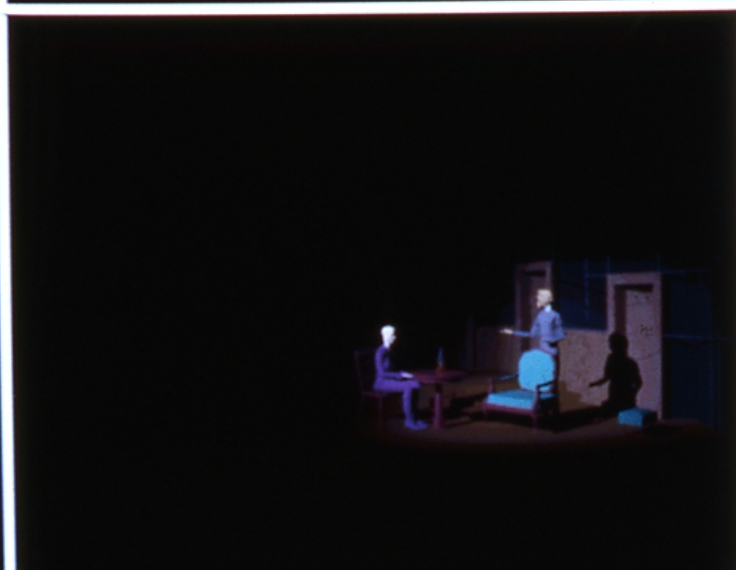
First attempt at modelling “scrim”.



Back then many images were presented as photographs of the monitor.. 36mm slides. Dye sublimation prints could not capture luminance, and data projectors were infants.

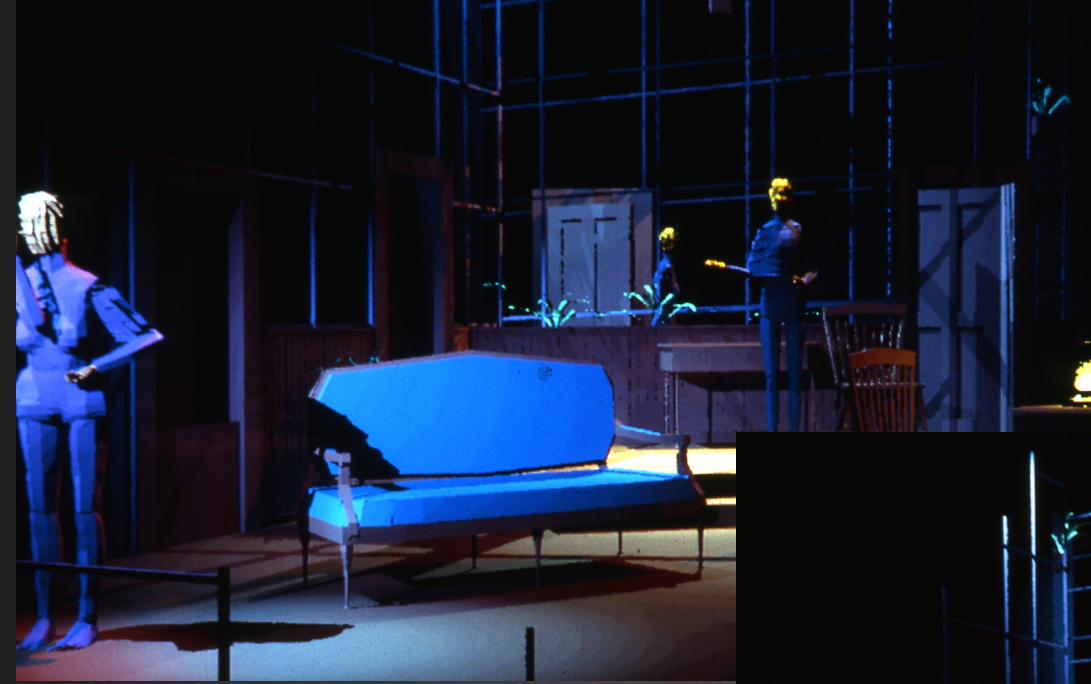


I learned how to model crude human shapes in Autocad. I regularly tested the function of each spotlight, and its effect, prior to installation....



g.midseat.pic
g.plan.pic
g.right.pic
g1.pic
g2.pic
stage.pic

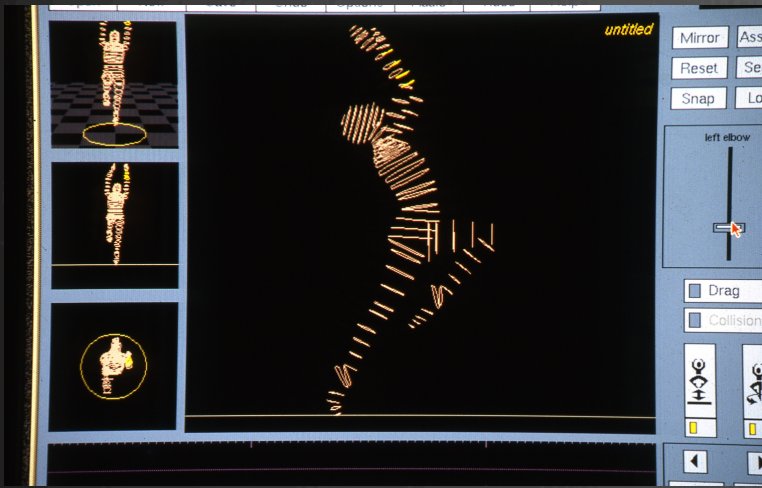
I learned how to model crude human shapes in Autocad. I regularly tested the function of each spotlight, and its effect, prior to installation...additive images.. GREAT!



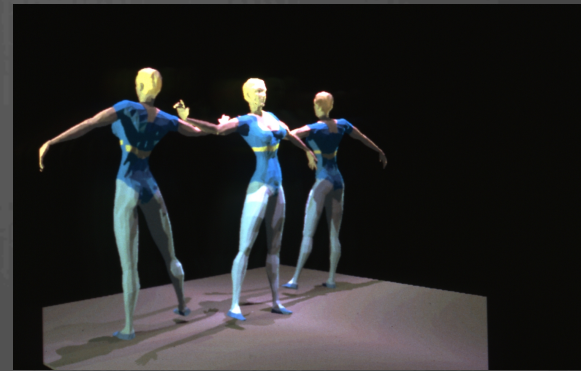
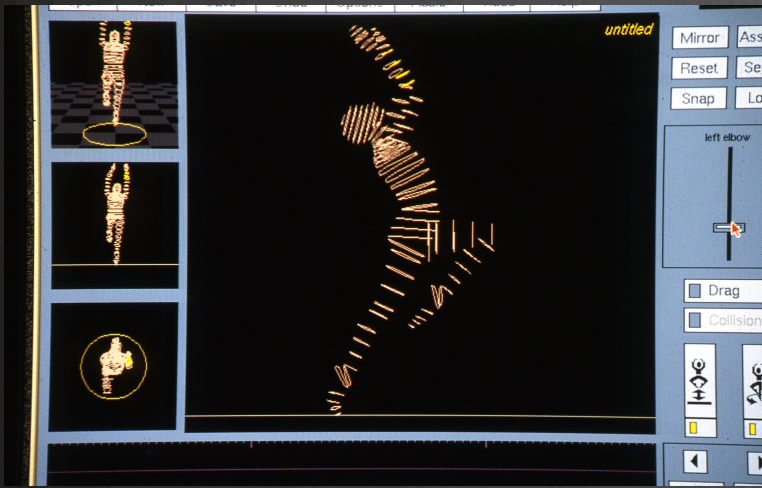
Concept images in 1990 for a Spring 1991 production of *GHOSTS* by Ibsen.



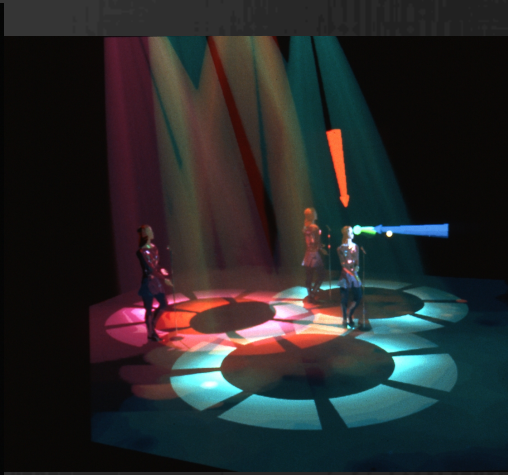
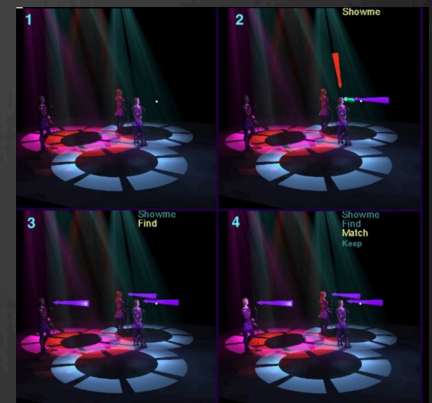
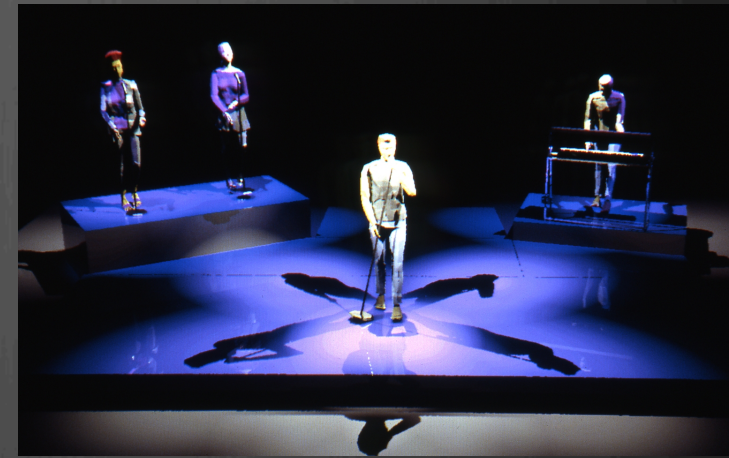
1992 Utah Shakespeare Festival, *Julius Caesar*.
I observed staging rehearsals in a basket ball court,
Modelled how the actors might appear on the 3d set,
photographed them, 1 hr development, then projected
them to the cast at the next rehearsal. VALUABLE!



Discovered *LIFEFORMS* in 1993, by Thecla Schiphorst.
Explored mapping her wireframes to my crude
mannequins....



Discovered *LIFEFORMS* in 1993, by Thecla Schiphorst.
Explored mapping her wireframes to my crude
mannequins... Then lit them.



Early days prior to THE BOOK

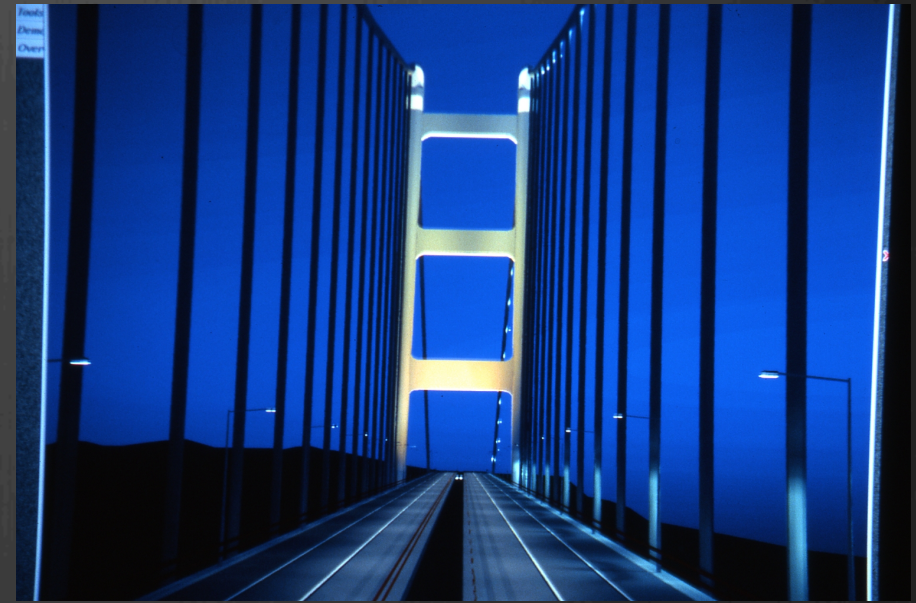
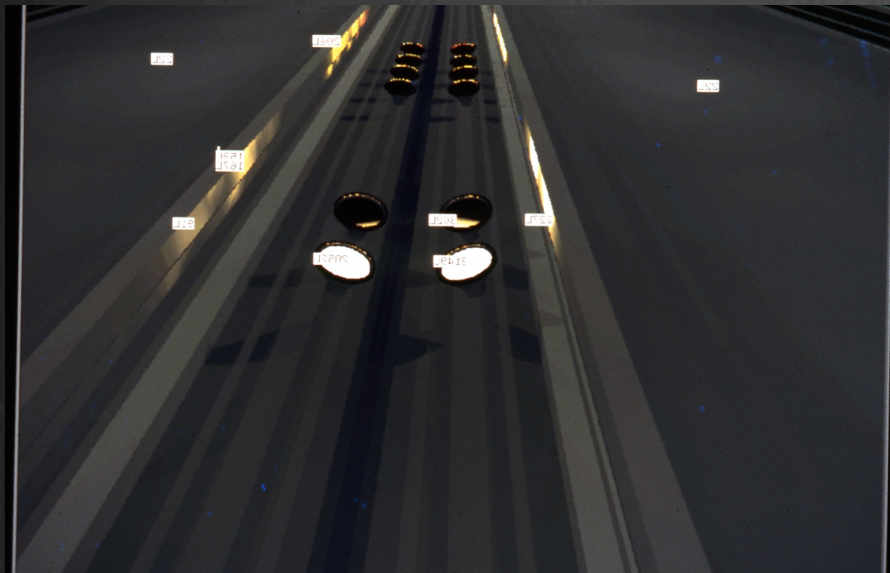
Tsing-Ma Bridge.
1.4 km
215m towers



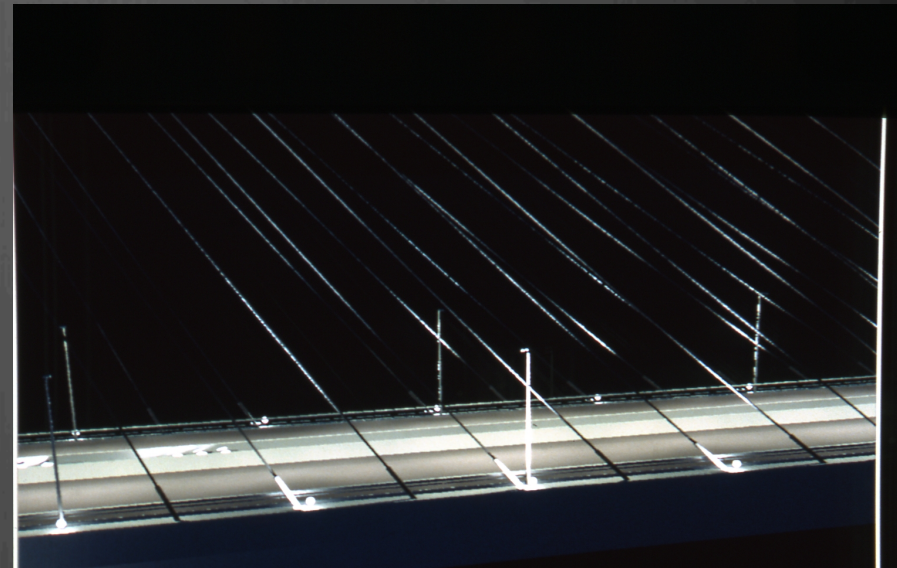
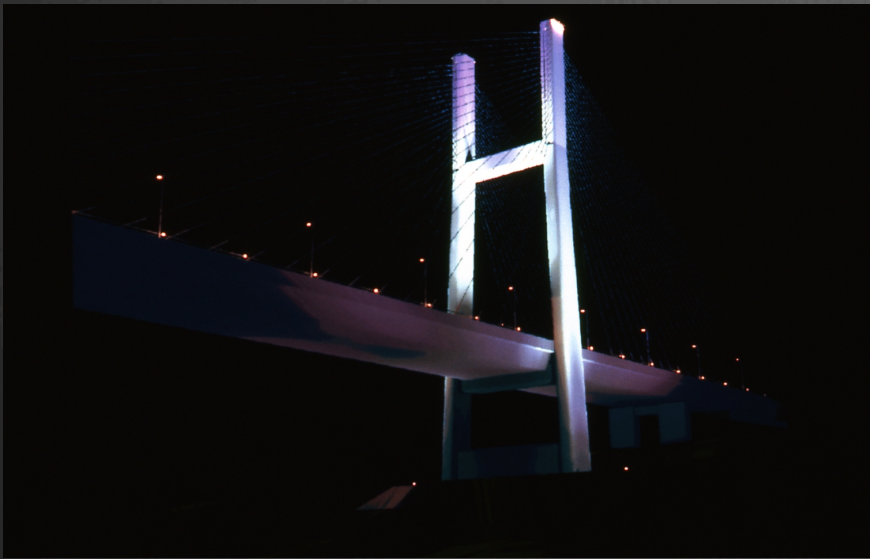
Adjacent Kap-Shui world's
largest cable stay (1996)



Architectural lighting became intense, beginning with lighting bridges... 1992-1996. Bridges to the new Hong Kong Airport... and one in Bangkok...



Architectural lighting became intense, beginning with lighting bridges... 1992-1996. Bridges to the new Hong Kong Airport...



Architectural lighting became intense, beginning with lighting bridges... 1992-1996. Bridges to the new Hong Kong Airport...



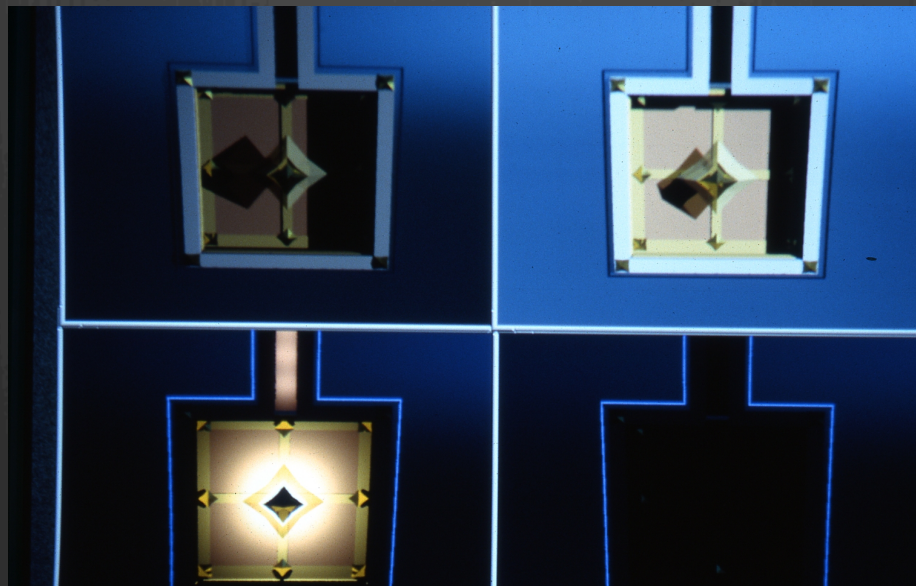
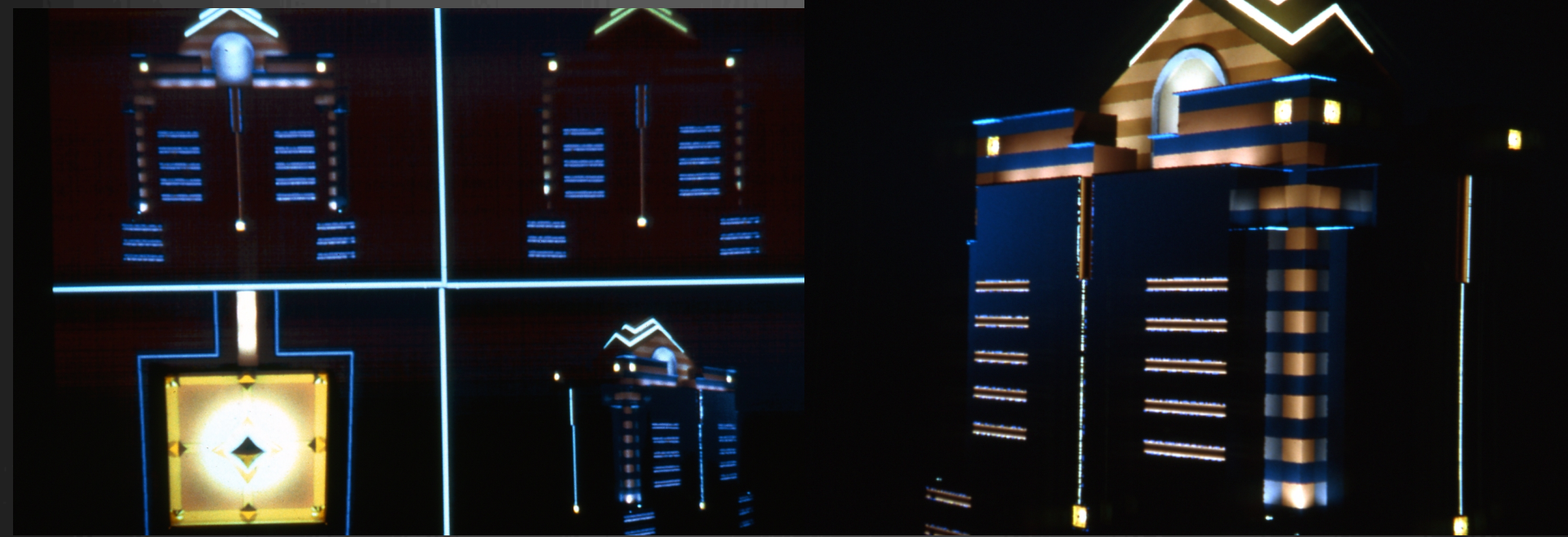
Tsing-Ma Bridge Lighting
Hong Kong
(c) SLD 1997



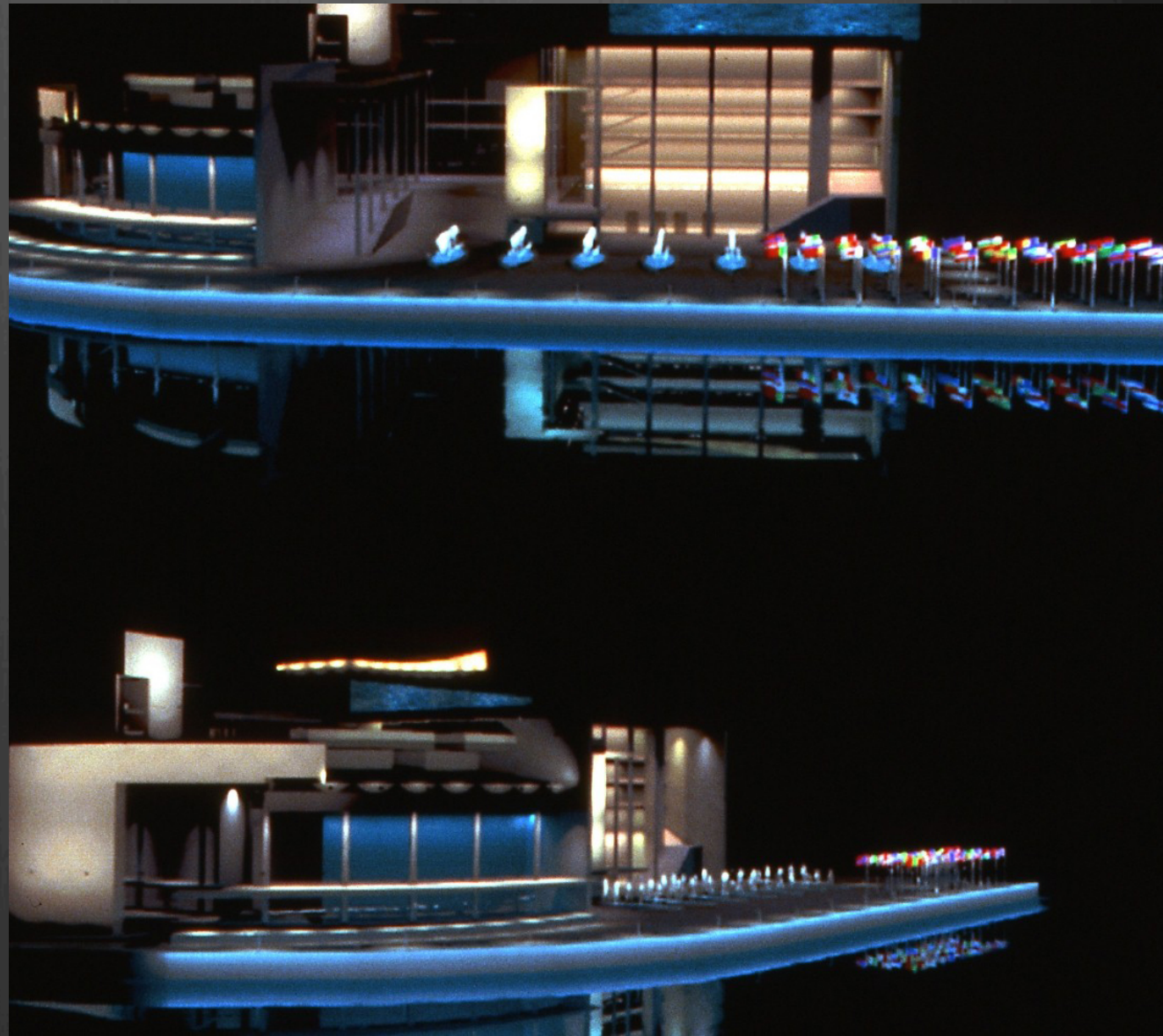
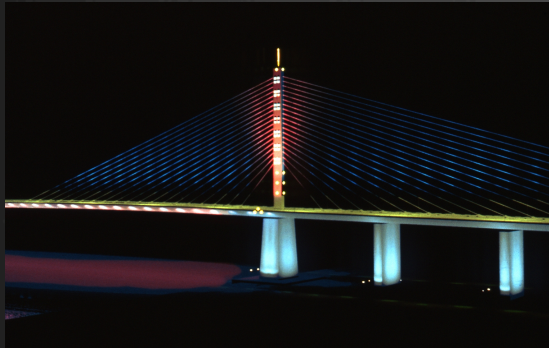
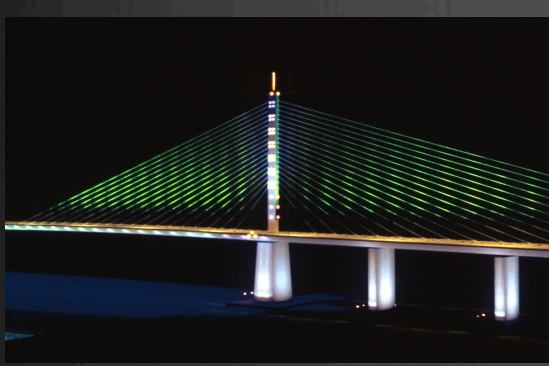
Kap-Shui Bridge Lighting
Hong Kong
(c) SLD 1997

Rob Shakespeare
Lighting Designer

Bridges connect Hong Kong to New Airport Island



1993- COSCO Tower, Hong Kong... façade jewelry



1993-94 Bangkok and Hong Kong projects



...in the beginning.