



Experiences with Radiance in Daylighting Design, Part V

**2011 Radiance Conference
Berkeley, California
August 24-26, 2011**

**Zack Rogers, P.E., IESNA, LEED AP BD+C
Daylighting Innovations, LLC**





Presentation Outline

- Project Examples
 - Laboratory / Office Atrium Study
 - Raleigh-Durham Airport Study
- Overhead Projector Studies
- Skylight Validation Studies
- Parametric Modeler and Daylight Profiler



Lab/Office Atrium Study – Schott PV

- Lab / Office building with Zero Energy Goals
- Balance between PV production and daylight saturation
- Schott PV with small gaps between each small cell
- Low PV efficiency, glare / solar gain concerns for office





Lab/Office Atrium Study – PV

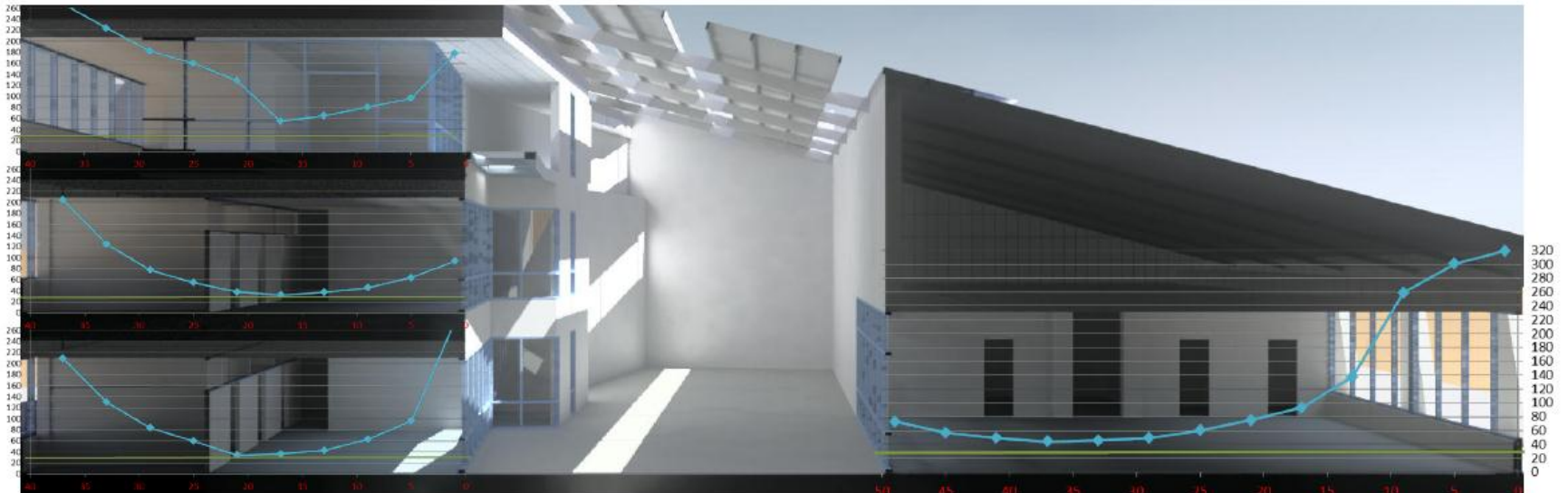
- High Efficiency PV with gaps between each panel
- Glare / solar gain concerns for office





Lab/Office Atrium Study – 3 Open Strips

- Nice sky view
- Direct glare and solar gain issues for offices





Lab/Office Atrium Study – 3 Translucent Strips

- No sky view
- No glare and solar gain issues for offices
- Nice diffusion, brightened walls





Lab/Office Atrium Study – 3 Baffled Skylights

- Nice sky view
- Limited glare and solar gain issues for offices
- Baffles help provide some diffusion and brighten walls





Lab/Office Atrium Study – Random Translucent Skylights

- Some sky view
- No glare and solar gain issues for offices
- Filtered light through tree canopy effect





Lab/Office Atrium Study – Stair Tower Highlight 1

- Some sky view
- Limited glare and solar gain issues for offices
- Highlighted stair tower walls





Lab/Office Atrium Study – Stair Tower Highlight 2

- Some sky view
- No glare and solar gain issues for offices
- Highlighted stair tower walls





Lab/Office Atrium Study – Sloped Ceiling

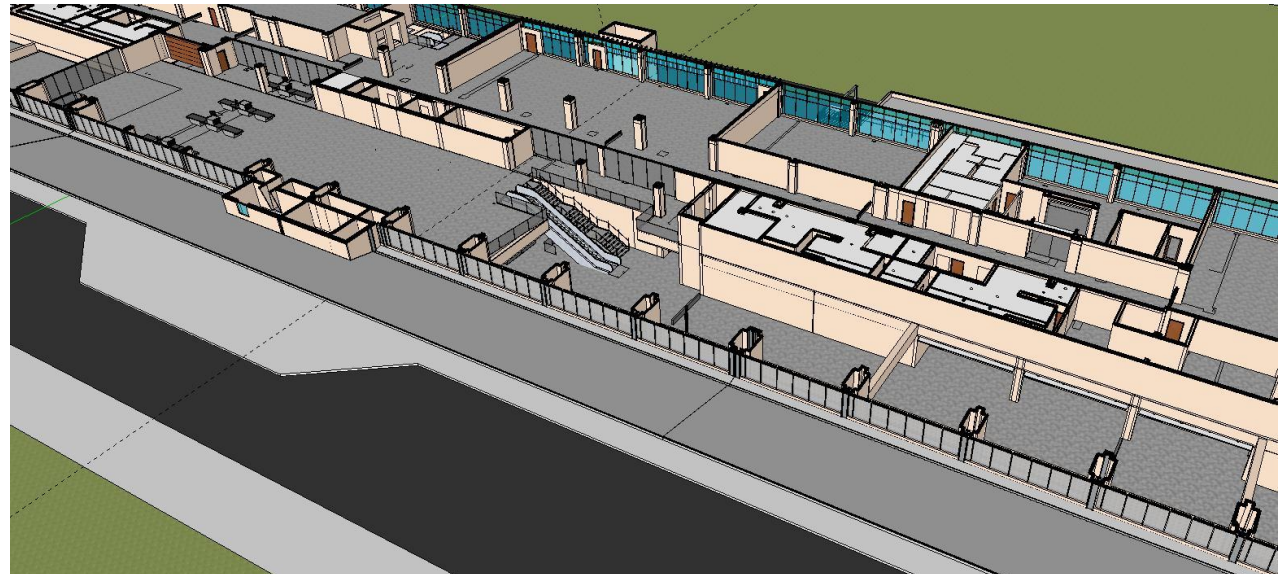
- Slight increase in the north zone of the lab





Raleigh-Durham Airport Terminal 1 Renovation

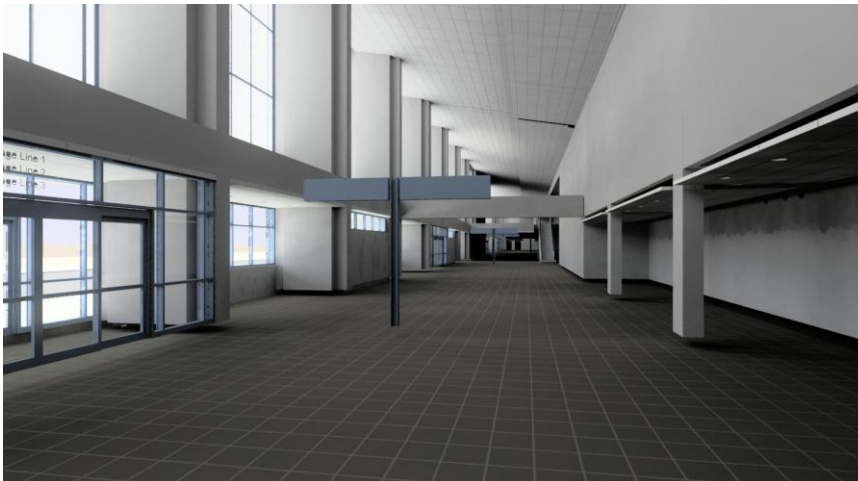
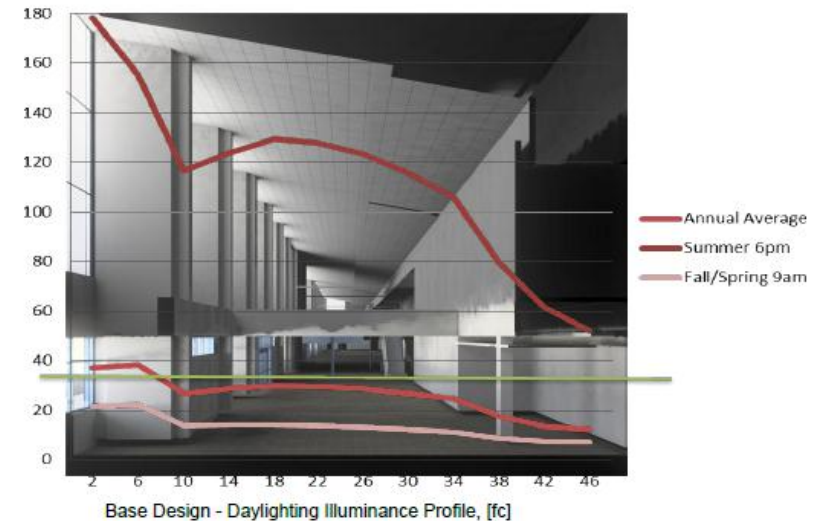
- Glare and thermal comfort issues on recently finished Terminal 2
- Expensive (\$ and political) after the fact fix could have been avoided by inexpensive design effort
- Interesting mix of mainly public, transient spaces with critical task locations



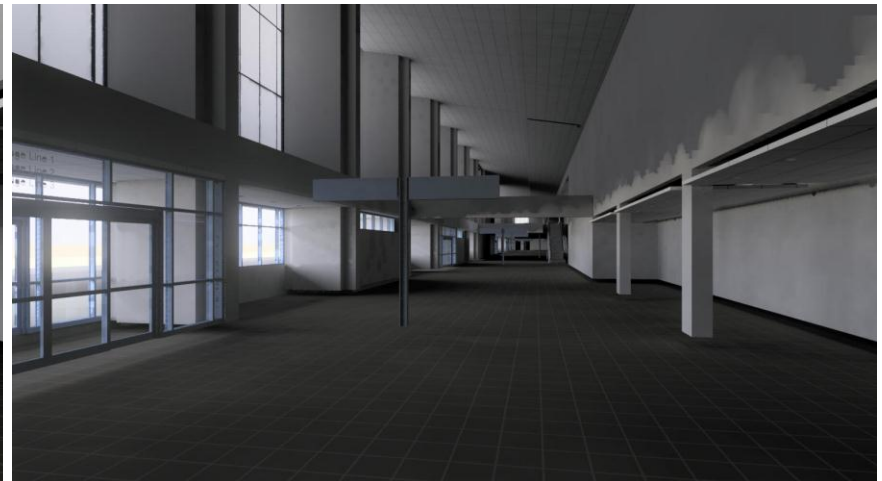


RDU Terminal 1 Ticketing Hall – 8% Kalwall

- Ticket counters are critical view
- 15 min of glaring sunlight when a passenger has just missed a plane is intolerable
- Large variance between morning (no sun) and afternoon (sun) conditions
- Lack of clerestory contribution apparent in splotchy shadow line



Summer 5pm

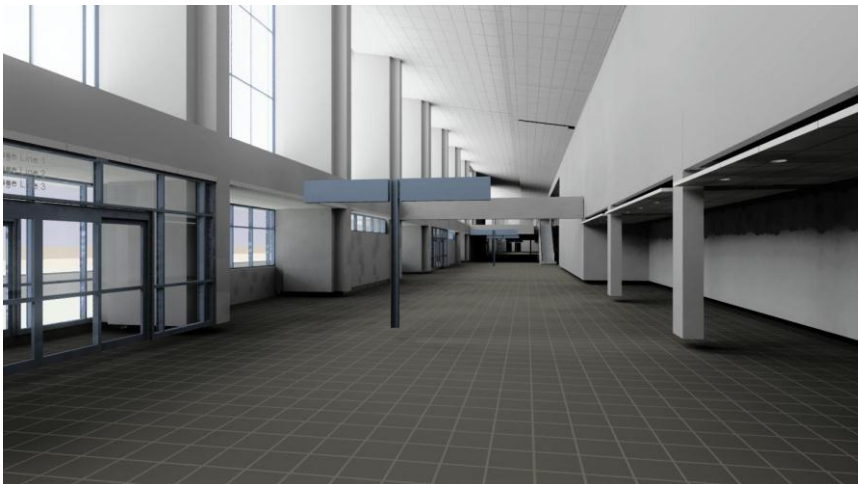
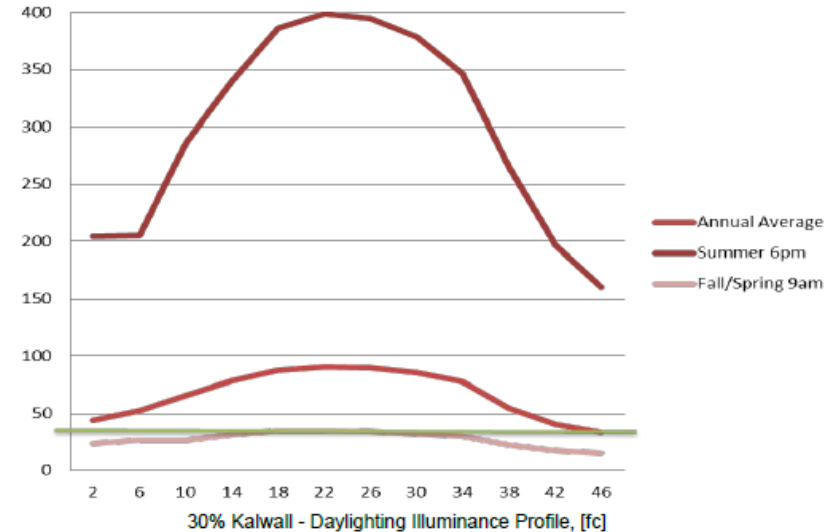


Equinox 9am

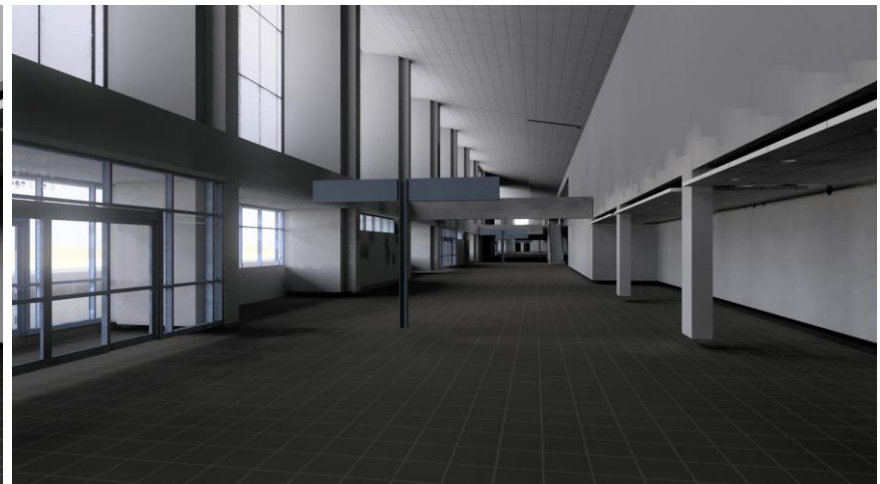


RDU Terminal 1 Ticketing Hall – 30% Kalwall

- Higher Tvis improves annual contribution
- Still large variance from morning to afternoon
- Increases potential for glare under direct sun
- Shadow line diminished



Summer 5pm

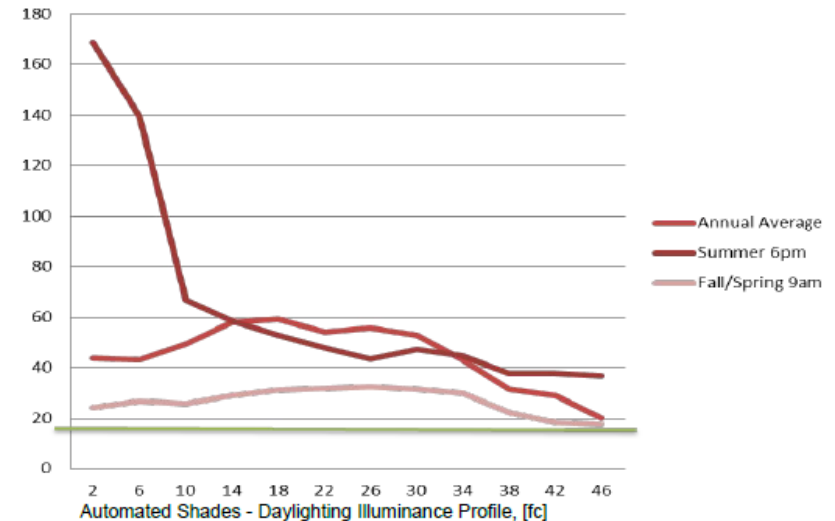


Equinox 9am



RDU Terminal 1 Ticketing Hall – 1% Automated Shades

- Variable window treatment provides good contribution annually
- Balances the morning to afternoon condition
- Maintains acceptable glare conditions in the afternoon
- Shadow line gone



Summer 5pm



Equinox 9am



RDU Terminal 1 Security Checkpoint – Critical Views

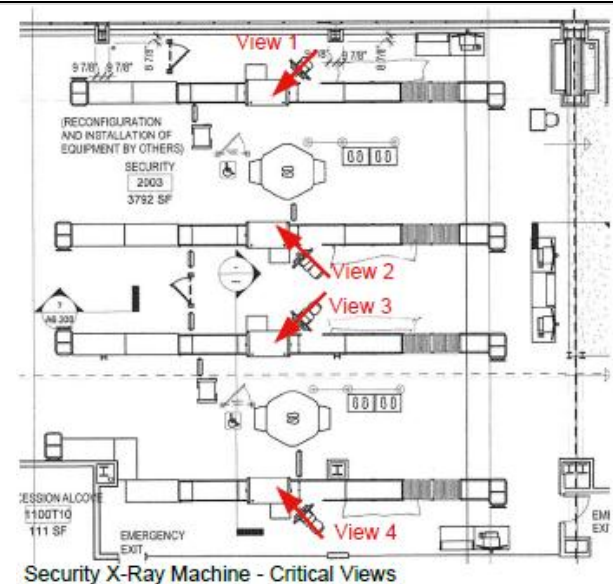
- Security checkpoint most critical task in airport
- View of X-ray displays defined as most critical views



View 4



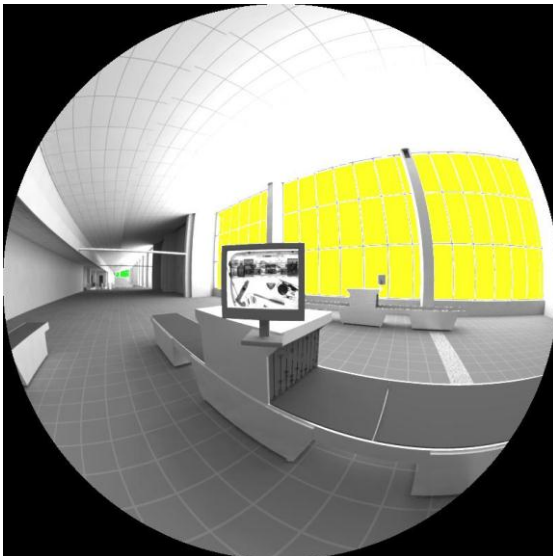
View 1



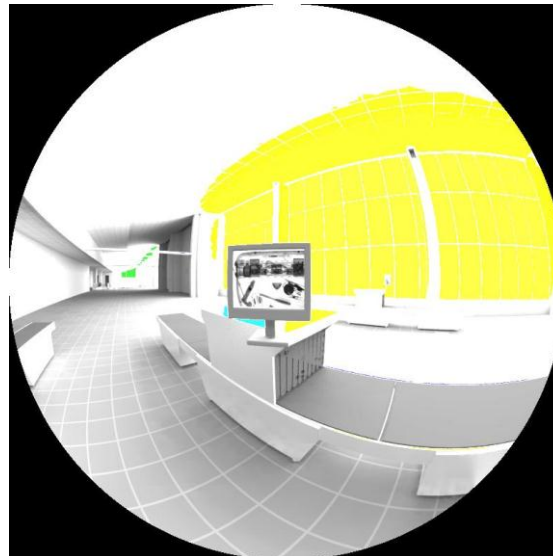


RDU Terminal 1 Security Checkpoint – Glare Analysis

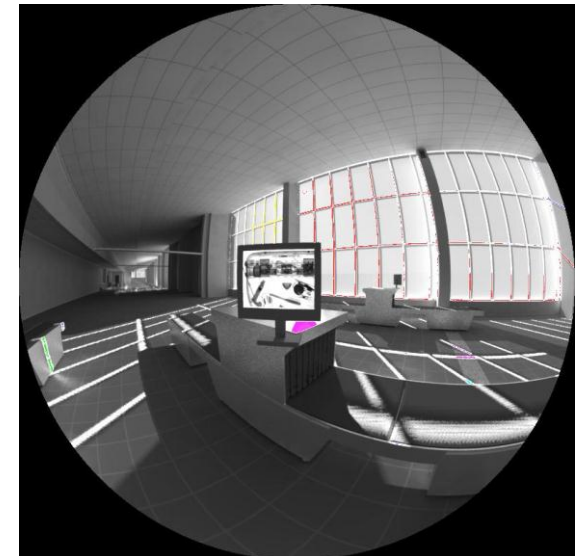
- Evalglare used to calculate Daylight Glare Probability for each scenario
- Task defined as 0.3 radian cone centered on display monitor
- Used cautiously – not as much absolute, more relative glare improvement
- Imperceptible: <33% critical, fixed location
- Perceptible: <38% critical, flexible location
- Disturbing: <42% no critical, “sparkle” desired
- Intolerable: <53%



View 2 – 8% Kalwall: DGP 23%



View 2 – 30% Kalwall: DGP 38%

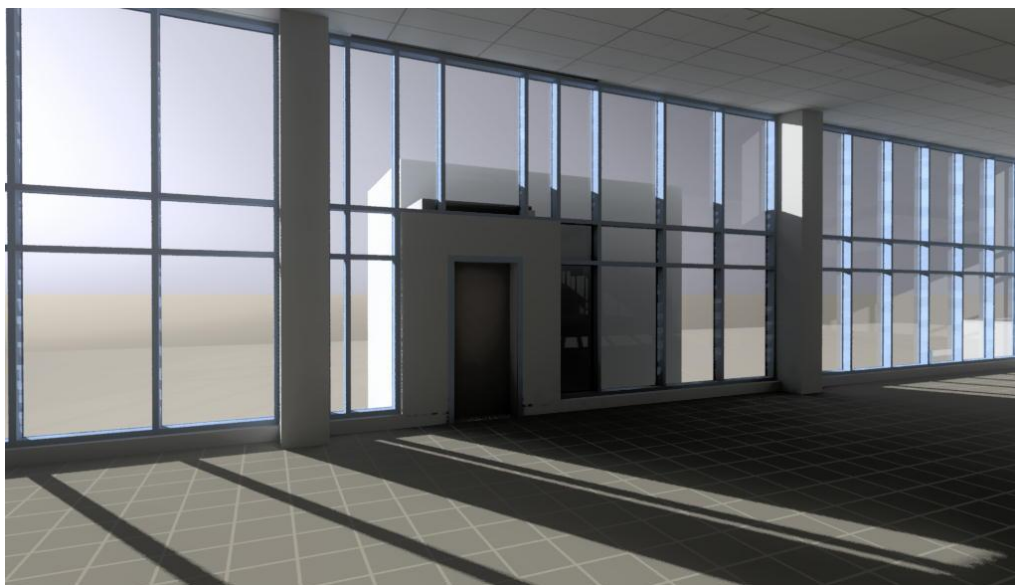
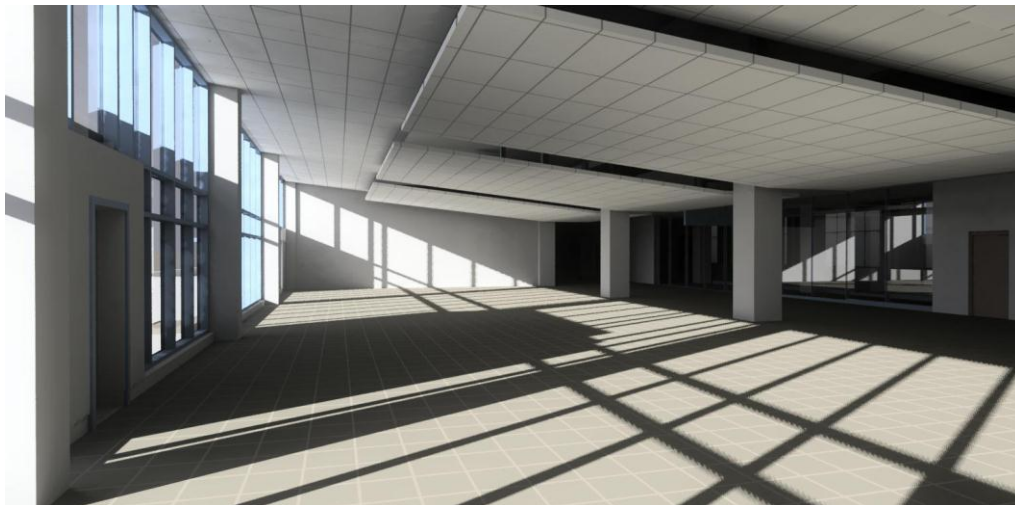


View 2 – 2% Fabric Shade: DGP 43%



RDU Terminal 1 Holding Rooms – Base Design

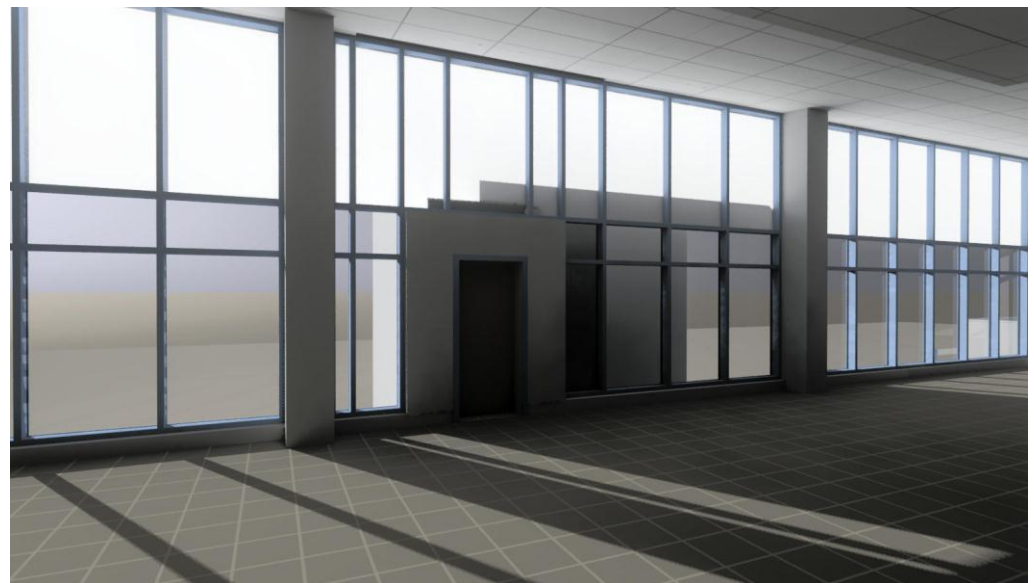
- Holding rooms contain small gate counter critical tasks
- Mostly leisure passenger space
- Thermal comfort major concern for crowded and delayed holding room
- Southwest facing 16' wall of glass!
- Too much direct sun – some control is needed
- Lower “view” glass treated separately





RDU Terminal 1 Holding Rooms – 30% Kalwall

- Diffusing glass provides thermal comfort
- Reduces direct sunlight glare, introduces potential glare from glass brightness
- Eliminates clerestory view to sky, does this matter?
- Fabric shade or additional translucent glass still likely needed mid and low panes
- Highly variable from morning to afternoon





RDU Terminal 1 Holding Rooms – 2% Fabric Shade

- Fabric shade provides visual relief and thermal comfort
- Provides balance between morning and afternoon
- Maintains some view through clerestory windows
- Airport authority scared of automated / motorized systems





RDU Terminal 1 Holding Rooms – Pivoting Ext. Louvers

- Static and pivotable exterior louver option explored
- Static option, given tough angles at 45deg south-east, deemed unacceptable
- Pivoting option allows for solar control while maintain views when possible – sun from north, view to the south
- Horizontal solutions undesirable – bird roosting, cleaning concerns





RDU Terminal 1 Holding Rooms – Pivoting Ext. Louvers

- Explored maintaining gaps between louvers at fully closed position
- Is a 21" shade patch between a 4" sun patch adequate for glare/thermal comfort control
- Are 4" gaps adequate to maintain view, is too much contrast introduced
- Gaps would only exist 30min when sun is near perpendicular





RDU Terminal 1 Holding Rooms – LightLouver Combo

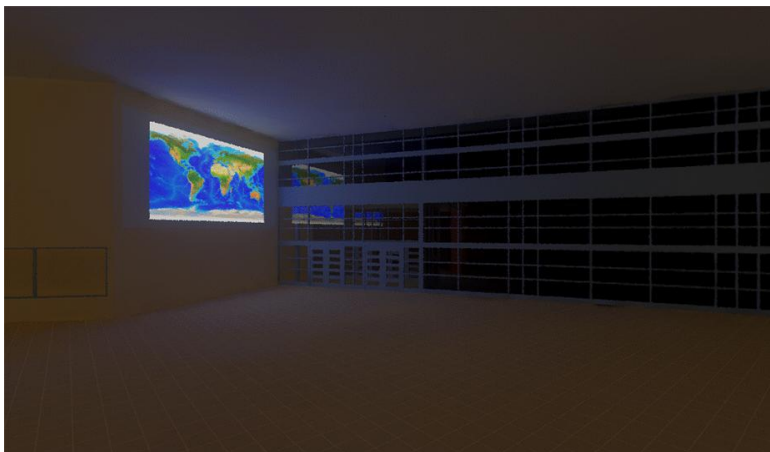
- Combination LightLouver solution with diffusing glass
- Ceiling configuration not optimal, exploring reconfiguration
- LightLouver IES files created via TracePro
- Script automatically sizes LightLouver “light” definitions
- New BSDF material is awesome!!!





Projector Studies

- Will a projection wall be visible in a highly glazed common room?
- Projector model built in Radiance
 - Explored directly mapping image to screen using “light” material – ambient light did not show up on surface
 - Explored mapping directly to a “spotlight” definition
 - With my limited Radiance skill, created a spotlight source, aimed through a “trans” film with image mapped, shielded to create square projection
- Globe map used to explore varying levels of contrast – black text on white least concern – dark and intricate images greatest concern



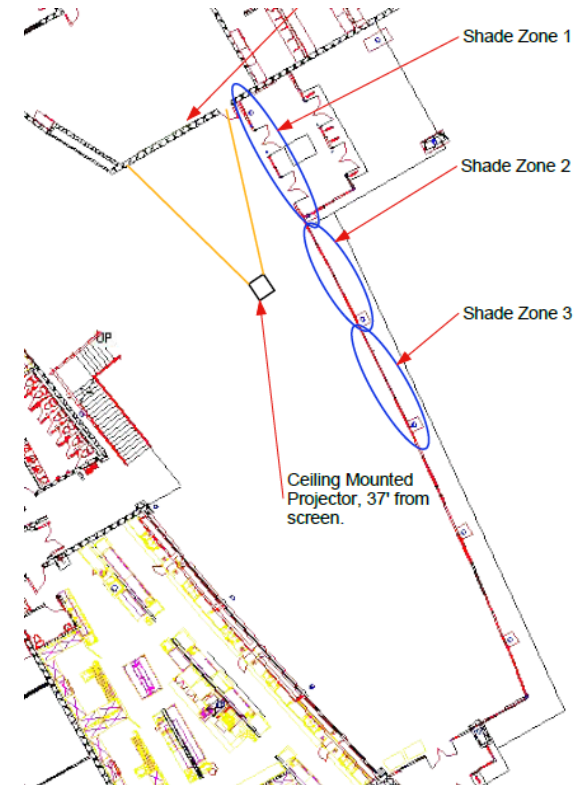
12	2	2	2	2	20	20	21	21	21	22	22	22	18	18	15	18	23	21	21	22	21	23	23	23	15	17	19	21	22	22	22	22	22	21	21	21	20	20	1	1	1	1								
12	2	2	2	2	20	20	21	18	21	20	15	21	22	20	7	5	4	5	23	21	23	23	14	6	3	3	4	5	6	6	6	6	6	7	4	4	19	6	5	5	5	7	20	1	1	1	1			
11	2	2	2	2	4	3	2	2	3	2	3	3	3	3	4	7	3	8	6	23	21	5	5	5	4	3	5	4	2	2	3	3	3	4	3	3	3	3	3	2	3	1	1	1	1					
11	1	1	1	1	2	5	3	5	4	3	3	2	3	2	4	5	4	3	5	3	3	3	4	3	5	6	2	2	5	2	2	3	3	2	2	2	2	2	2	3	2	3	5	5	3	1	1	1		
10	1	1	1	1	1	2	2	2	3	3	4	3	6	4	2	2	2	2	6	3	3	3	3	6	5	3	3	4	4	4	5	4	5	4	3	4	3	2	3	2	5	4	4	2	1	1	1			
10	1	1	1	1	1	2	2	2	3	4	5	4	5	3	3	5	5	2	3	2	3	2	3	3	3	6	3	4	4	4	18	16	7	4	4	9	9	14	5	3	3	2	2	2	1	1	1			
9	1	1	1	1	1	2	2	2	2	2	2	12	7	5	3	3	2	2	2	2	3	2	4	4	9	16	5	4	4	18	7	11	13	4	9	11	9	4	4	5	3	5	2	2	2	1	1	1		
9	1	1	1	1	1	2	2	2	2	2	3	5	7	5	3	5	2	2	2	2	2	2	3	19	16	18	20	22	18	20	20	12	11	17	9	4	3	3	2	5	2	3	2	2	2	1	1	1		
8	1	1	1	1	1	2	3	2	2	2	2	3	3	3	4	2	3	4	2	2	3	2	2	19	21	18	15	21	16	20	5	19	22	3	6	5	5	5	4	4	3	2	2	2	2	1	1	1		
8	1	1	1	1	1	2	2	2	2	2	2	3	3	3	3	6	4	2	2	2	2	2	6	5	7	8	7	6	5	4	4	4	2	3	4	3	4	5	5	4	3	2	2	2	2	1	1	1		
7	1	1	1	1	1	2	2	2	2	2	2	3	3	3	4	4	3	3	3	2	2	2	2	4	2	5	3	3	3	5	9	2	3	2	3	2	4	2	5	3	3	2	2	2	1	1	1			
7	1	1	1	1	1	2	2	2	2	2	2	3	3	3	3	3	2	2	3	3	2	2	2	2	2	2	3	2	3	5	2	4	2	2	2	2	2	4	5	5	2	3	2	4	4	3	1	1	1	
6	1	1	1	1	1	2	2	2	2	2	3	3	2	3	2	5	2	3	2	4	2	2	2	2	2	3	3	2	3	3	2	4	3	2	2	2	2	2	2	2	5	5	3	2	1	1	1			
6	1	1	1	1	1	2	2	3	3	3	2	2	2	2	6	3	3	4	6	2	2	3	2	2	2	5	5	5	3	4	2	3	2	2	2	2	2	2	2	5	6	6	5	3	3	1	1	1		
5	1	1	1	1	1	2	2	2	2	2	3	3	3	2	3	7	3	2	5	3	2	2	3	2	2	13	6	3	2	4	2	2	3	2	2	2	2	2	2	2	5	5	4	8	4	2	3	1	1	1
5	1	1	1	1	1	2	2	2	2	2	3	3	3	2	2	10	3	4	2	2	3	3	2	2	2	5	2	2	3	2	2	3	2	2	2	2	2	2	2	2	3	2	4	4	3	2	4	1	1	1
4	1	1	1	1	1	2	2	2	2	2	3	2	2	2	3	4	5	2	2	2	2	2	2	2	3	2	2	2	2	3	2	2	2	2	2	2	2	2	2	2	2	2	2	2	2	1	1	1		
4	1	1	1	1	1	2	2	2	2	2	3	3	2	2	2	4	5	4	3	2	2	2	2	2	3	2	2	2	2	2	2	2	2	2	2	2	2	2	2	2	2	2	2	2	2	1	1	1		
3	1	1	1	1	1	2	2	3	3	2	2	2	2	2	2	2	3	2	3	3	2	2	2	2	2	2	2	2	2	2	2	2	2	2	2	2	2	2	2	2	2	2	2	2	2	1	1	1		
3	1	1	1	1	1	2	2	2	2	2	2	2	2	2	2	2	4	10	4	2	2	2	2	2	2	2	2	2	2	2	2	2	2	2	2	2	2	2	2	2	2	2	2	2	2	1	1	1		
2	1	1	1	1	1	2	2	4	5	12	7	5	8	16	14	9	11	8	5	5	4	3	7	9	13	11	12	14	13	11	12	12	11	6	9	12	12	9	8	12	17	12	9	11	10	12	7	1	1	1
2	1	1	1	1	1	7	5	5	5	7	8	8	7	9	8	6	4	5	5	6	3	5	10	8	13	11	8	7	7	7	8	8	8	7	7	8	9	9	8	7	8	10	9	7	8	6	1	1	1	
1	1	1	1	1	1	12	12	13	13	13	13	13	14	14	14	14	14	14	14	14	14	14	15	15	14	14	14	13	14	13	13	13	12	13	13	13	12	12	12	12	12	12	12	12	1	1	1	1		
1	1	1	1	1	1	1	1	1	1	1	1	1	1	1	1	1	1	1	1	1	1	1	1	1	1	1	1	1	1	1	1	1	1	1	1	1	1	1	1	1	1	1	1	1	1	1	1			
	1	1	2	2	3	3	4	4	5	5	6	6	7	7	8	8	9	9	10	10	11	11	12	12	13	13	14	14	15	15	16	16	17	17	18	18	19	19	20	20	21	21	22	22	23	23	24	25	25	26

6,000 mid-range projector



Projector Studies

- Explored varied fabric shade openness in 3 different zones
- Explored different projector lumen output options – increased lumens typically increased \$
- Claims of 5,000:1 contrast?
 - Projector provides a max of 22fc for our globe scene
 - Ambient lighting would have to be less than 0.004fc?
- Vertical illuminance must be below 20fc to even maintain 2:1 contrast



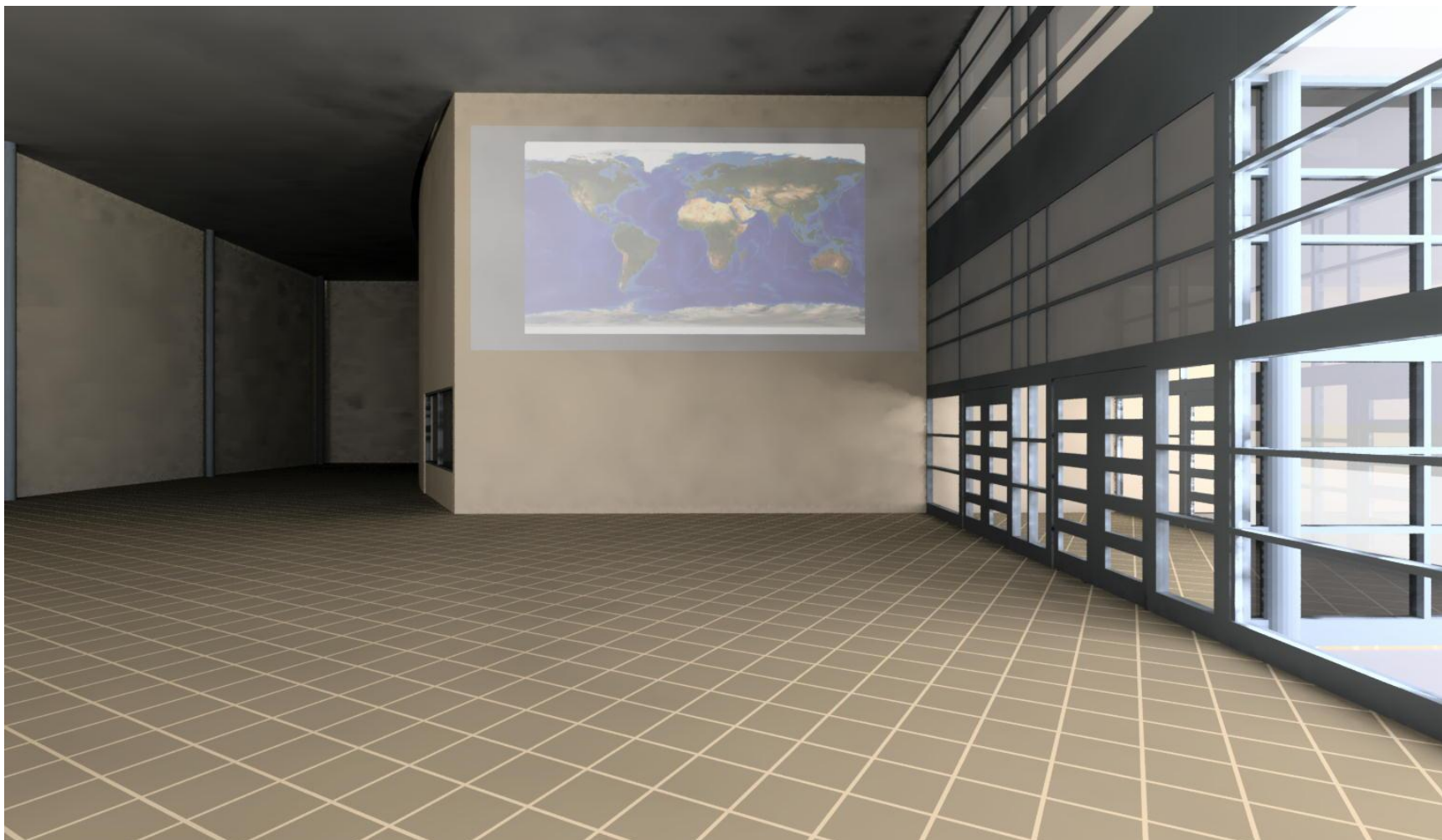


Projector Studies – Top 3% Shades, 6,000 Lumen projector





Projector Studies – Zone 1 Shades



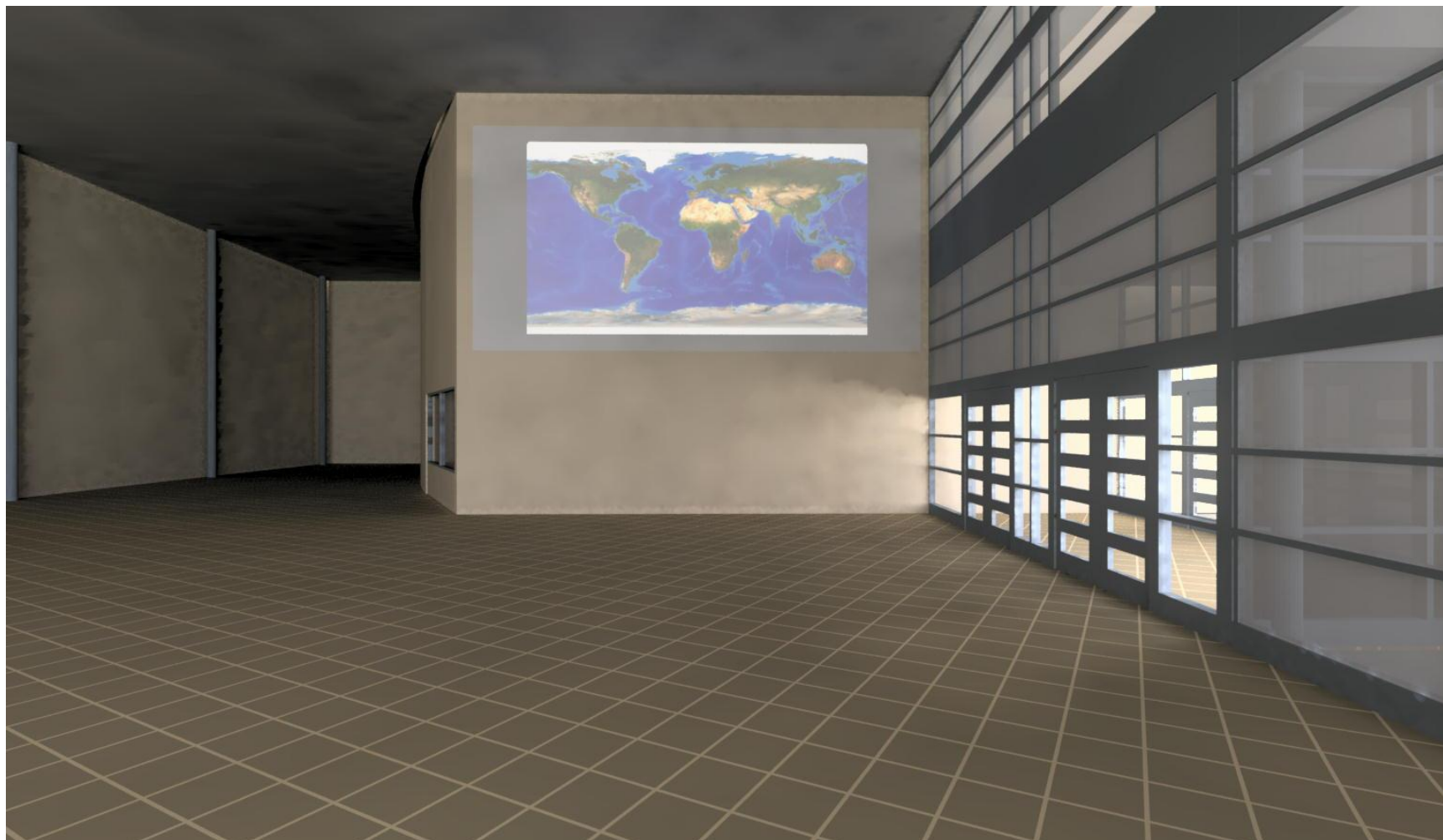


Projector Studies – Zone 1 & 2 Shades



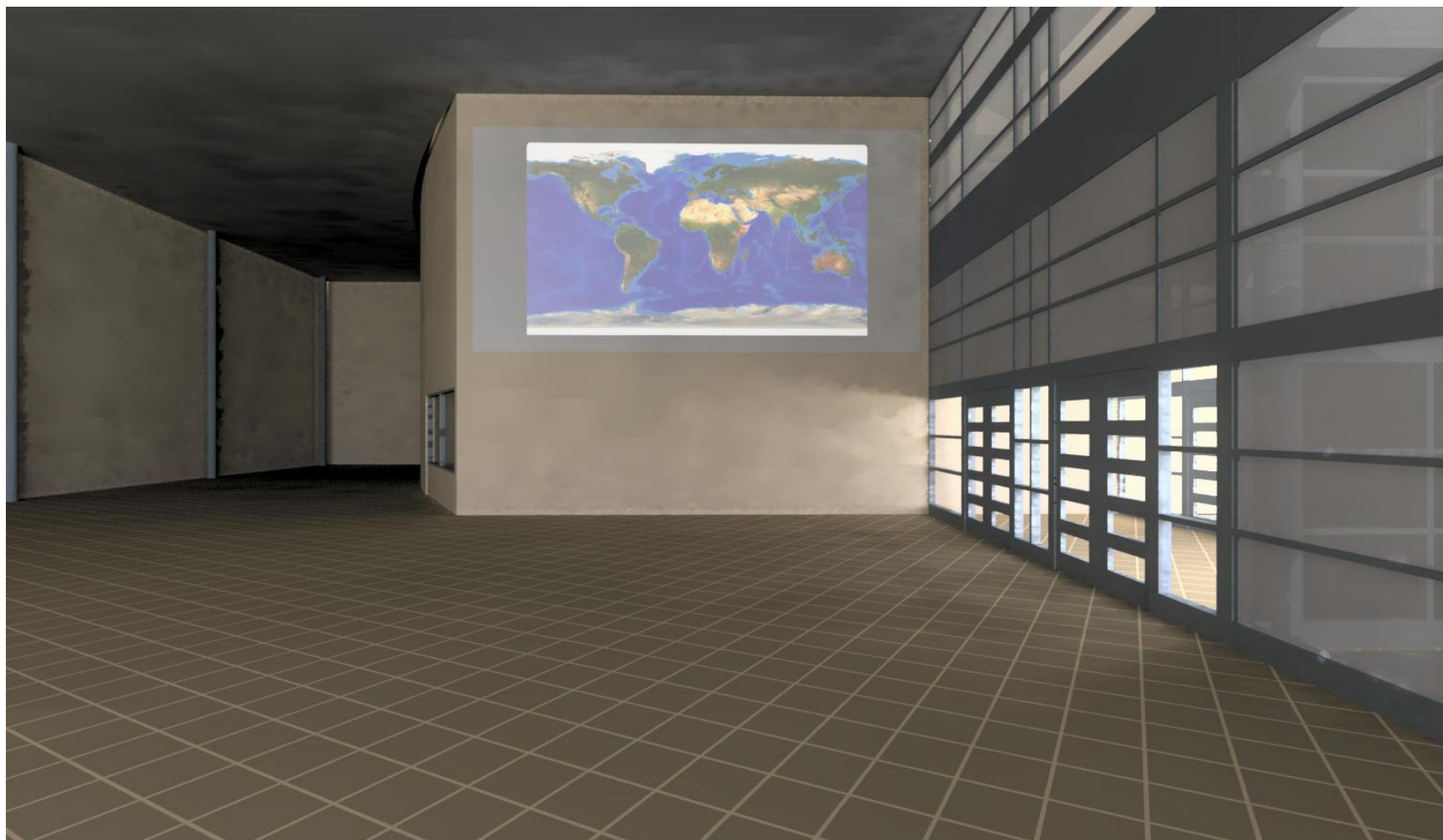


Projector Studies – Zone 1 – 3 Shades





Projector Studies – 1% Shade





Projector Studies – 1% Shade, 12,000 lumen projector





Optical Skylight Validation – Team and Facility

- Effort to capture HDR skies and interior photometrics for optical skylights
- Thanks to Luis Fernandez and Anothai Thanachareonkit for developing measurement equipment and methodology
- Thanks to Bruce Mosher for providing facility





Optical Skylight Validation – Equipment / Installation

- Initially aimed at validating TracePro and Photopia methods for generating daylighting system photometrics
- Interest in validating photon-mapping and maybe genBSDF for larger optical systems?
- Testing done during July in Greenwood, South Carolina
- 90deg, 90% humidity = challenge: how to keep your butt from burning and your notes dry
- Chose summer to capture low and high sun angles





Optical Skylight Validation – Skylight Systems

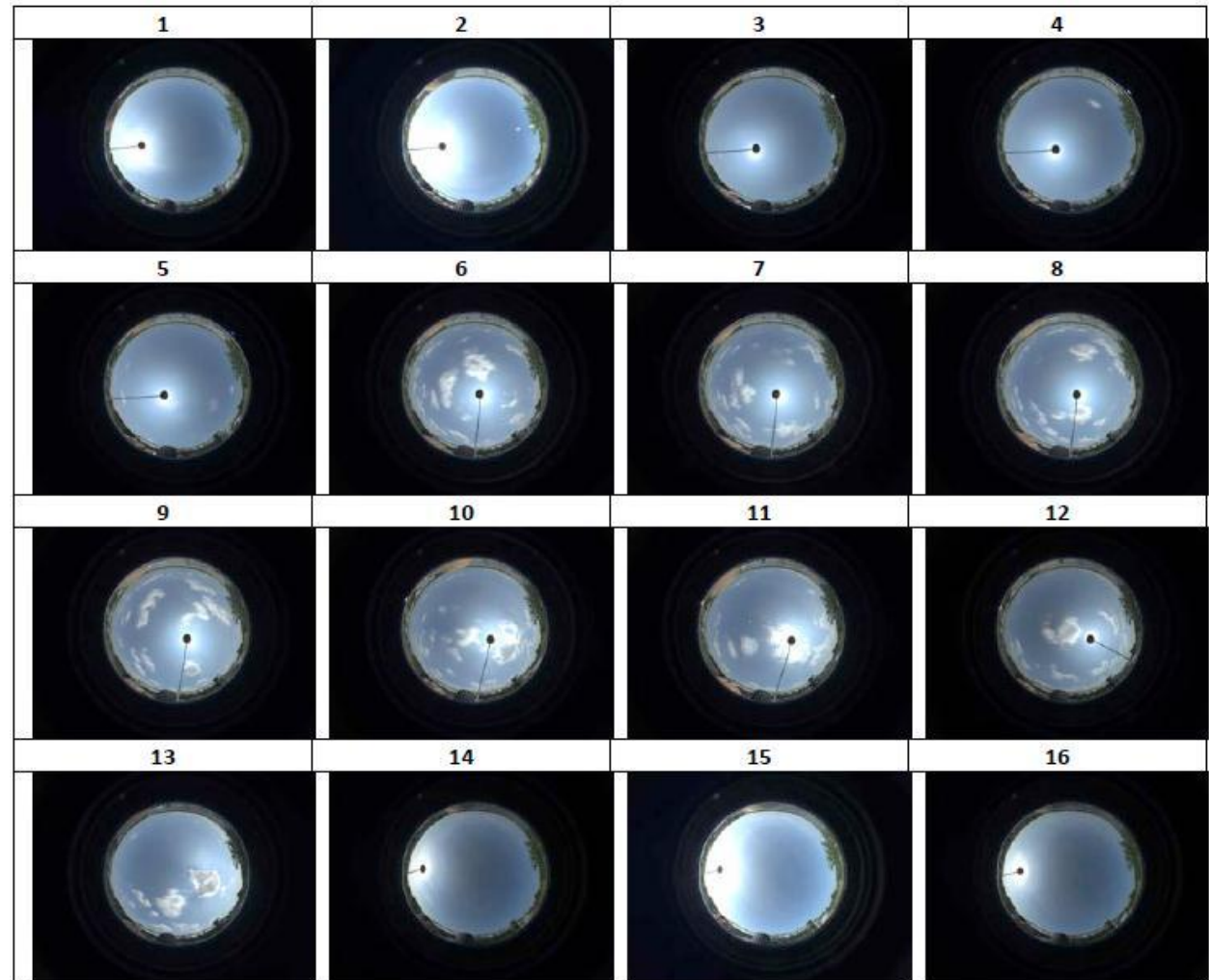
- Tested range of optical complexity
 - Simple: single layer of optics, diffuse light box
 - Medium: two layers of optics, simple mirror light box
 - Complex: two layers of optics, complex interreflection in between
- Imperfections in physical systems inevitable – how close can a computer simulation come
- Suggest adding computer simulation path for testing daylighting products in IESNA LM-81-10





Optical Skylight Validation – HDR Sky Images

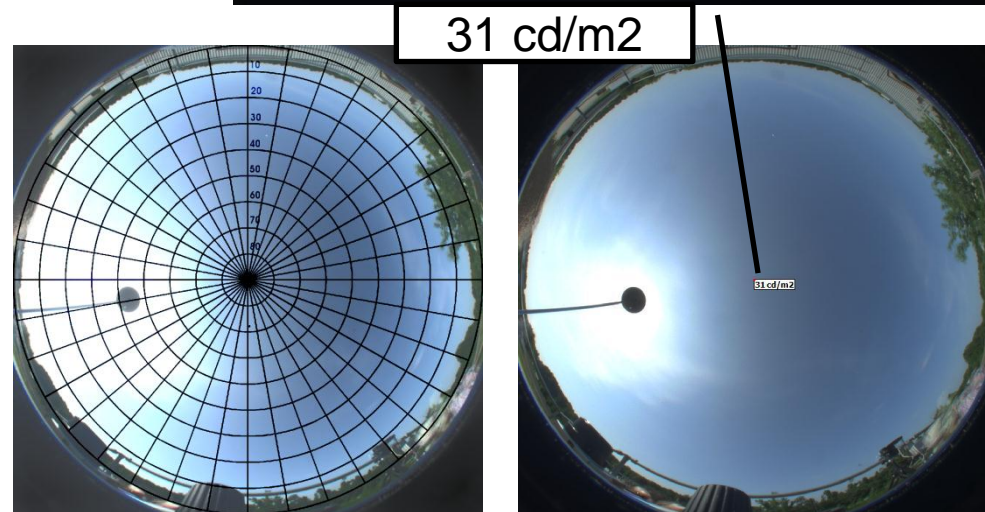
- Captured 31 skies, roughly 10 for each skylight system
- Used a 10° disc to shield sun
- Only got 1 partly cloudy sky with the solar disc obscured
- Need to figure out a way to fill in the disc





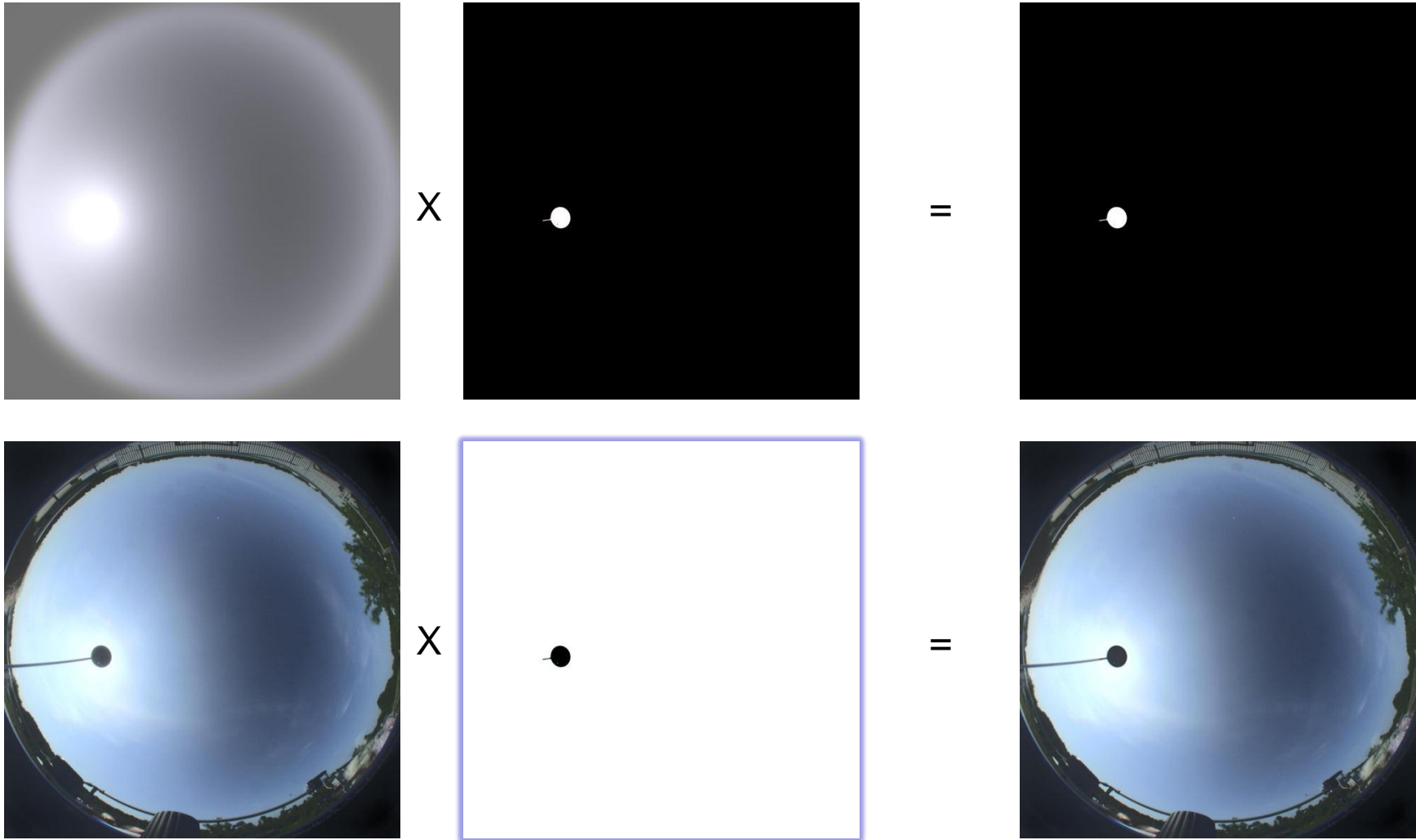
Optical Skylight Validation – HDR Sky Cropping

- First cropped sky capture to a perfect hemisphere
- Cropped image lost absolute luminance information
 - Zenith luminance appears to drop in cropped image
 - Thanks to Greg / Radiance online for method of maintain header information
- Concern with actual angular hemispherical mapping of Nikon FCE9 Fisheye Converter Lens system, any experience?





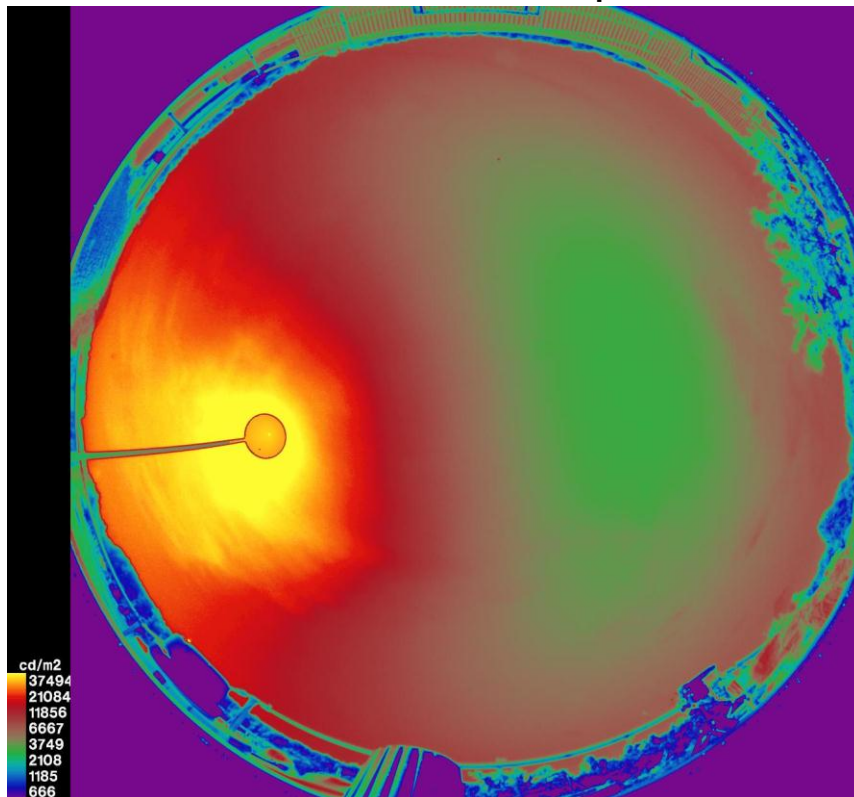
Optical Skylight Validation – Masking



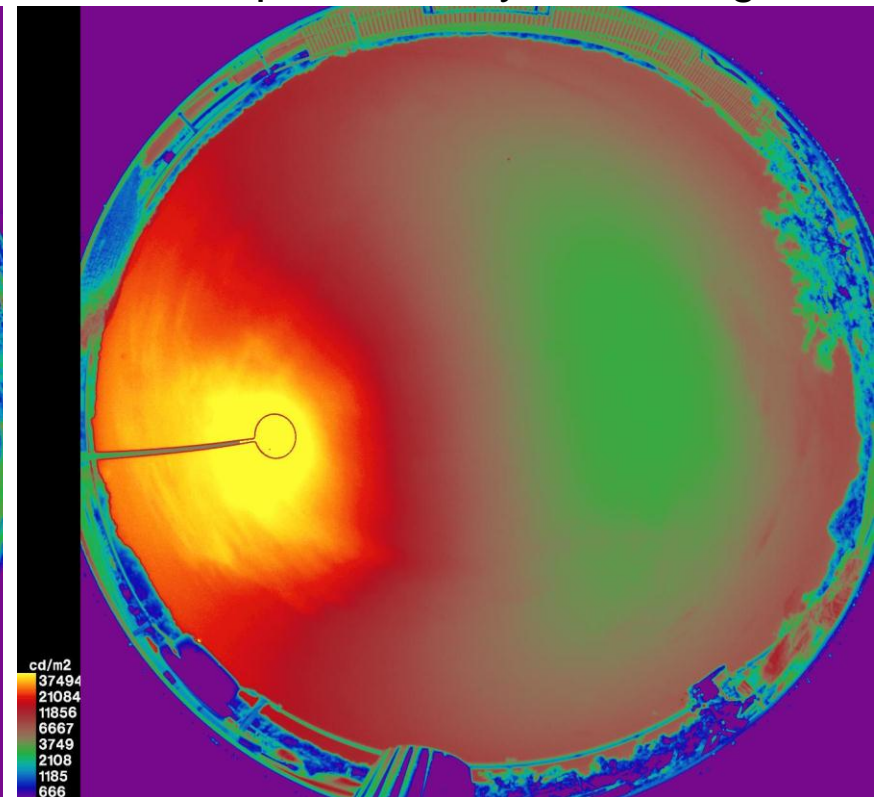


Optical Skylight Validation – Combined Sky

- Calibrate masked sky image to diffuse sky illuminance measurement
- Calibrate patch filler by matching luminance in circumsolar region
- Calibrate solar intensity to direct illuminance
- Create TracePro / Photopia source files via lookup to final sky HDR image



Sky filler calibrated to zenith luminance

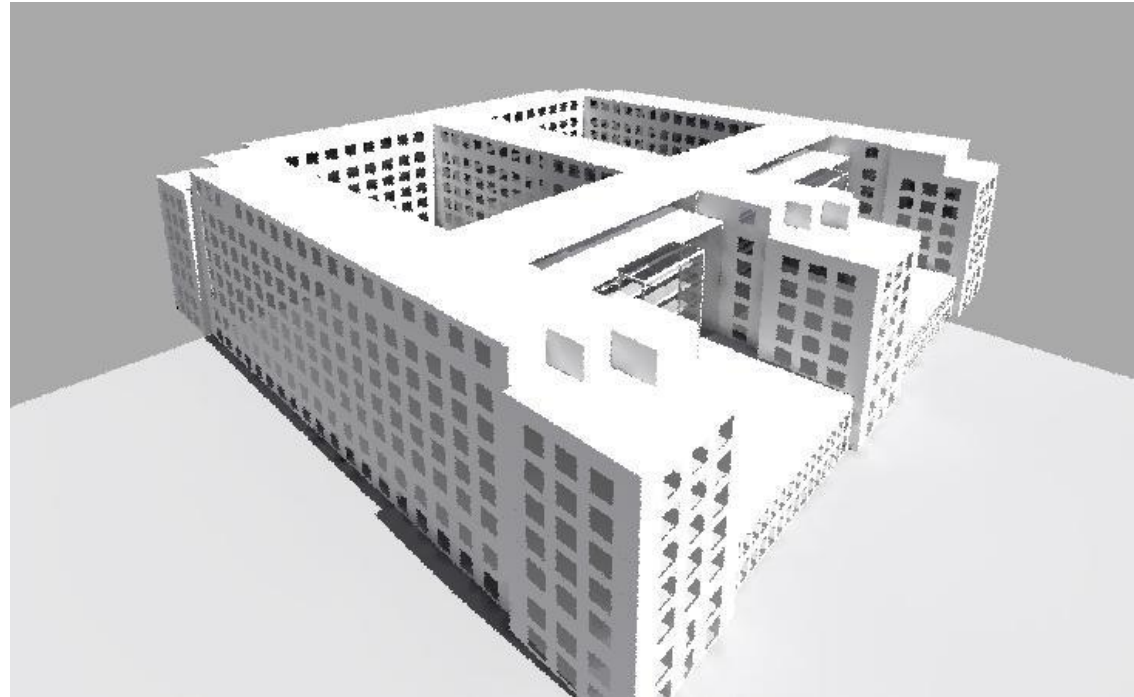


Sky filler calibrated to circumsolar region



Parametric Modeling and Daylight Profiling – stay tuned

- Parametric modeler that creates Radiance and Energy Plus models via IFC files
- Challenge: how to efficiently automate daylight simulation for an entire building
 - Method to autogenerate illuminance grids for any shape of daylit space
 - Method to identify similar spaces to reduce overall calculation time





SPOT v4.2 Released

- Upgraded to work with newer Windows OS (Windows XP, Vista, 7; 32bit, 64bit)
- Upgraded to work with new versions of Office 2007 and 2010. Best under Excel 2010
- Variety of bugs fixed (some introduced?)
 - Compiled python scripts (eases installation)
 - Eliminated path related issues
- Added new annual daylight metrics
 - Daylight Saturation (aka Continuous Daylight Autonomy)
 - UDI
- Available for download: www.archenergy.com/SPOT
- New SPOT user list on google groups



Questions?

Experiences with Radiance in Daylighting Design, Part V

**2011 Radiance Conference
Berkeley, California
August 24-26, 2011**

**Zack Rogers, P.E., IESNA, LEED AP BD+C
Daylighting Innovations, LLC**

