

# Simulating for Nothing

Radiance's role in the design of a large net zero energy building



**Eighth Annual Radiance  
Workshop, Harvard  
University**

**Rob Guglielmetti**

**October 22-23, 2009**

# Simulating for Nothing

---

National Renewable Energy Laboratory  
Research Support Facility (RSF)  
Net Zero Energy Office Building





# Introduction

---

## Acknowledgements

- Initial daylighting design developed by RNL Design (Architect), Stantec (Engineer), and Architectural Energy Corporation (Sustainable Design Consultant)
- Daylighting design refined by the speaker while employed by Architectural Energy Corporation
- Speaker is now employed by the National Renewable Energy Lab (NREL)
- Images and data were presented to NREL throughout the design process

# Introduction

---

## Project Goals

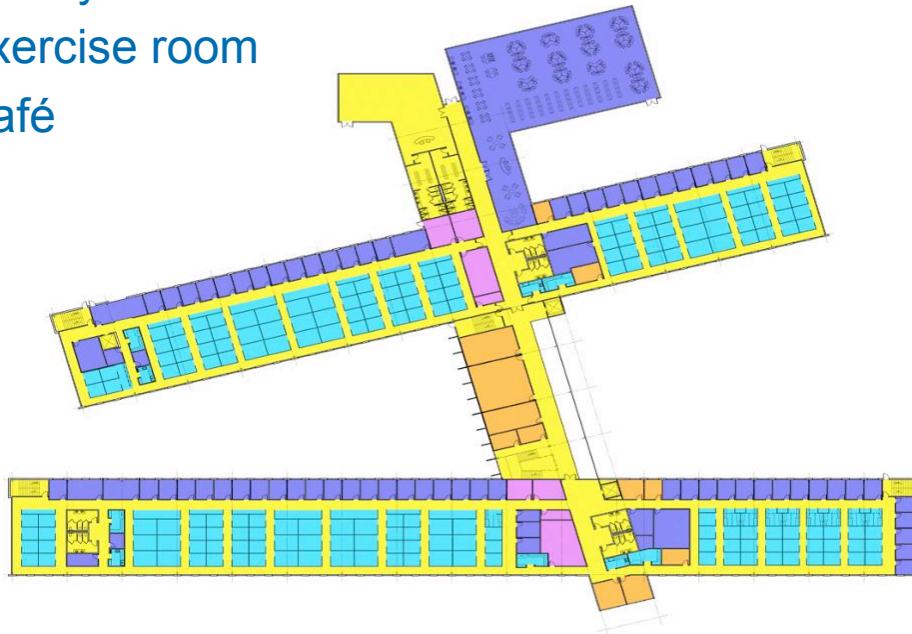
- Capacity: 750 people
- Size: 220,000 ft<sup>2</sup>
- EUI: 25 Kbtu/ft<sup>2</sup>/yr
- 50% energy savings over ASHRAE 90.1
- \$250/ft<sup>2</sup>
- LEED Platinum
  - LEED IEQ 8.1 (daylighting) credit *required*
- Net Zero Energy building, via:
  - Base building energy efficiency
  - On-site wood chip heating facility
  - Roof- and site mounted PV (power purchase agreement)



# Introduction

## Program

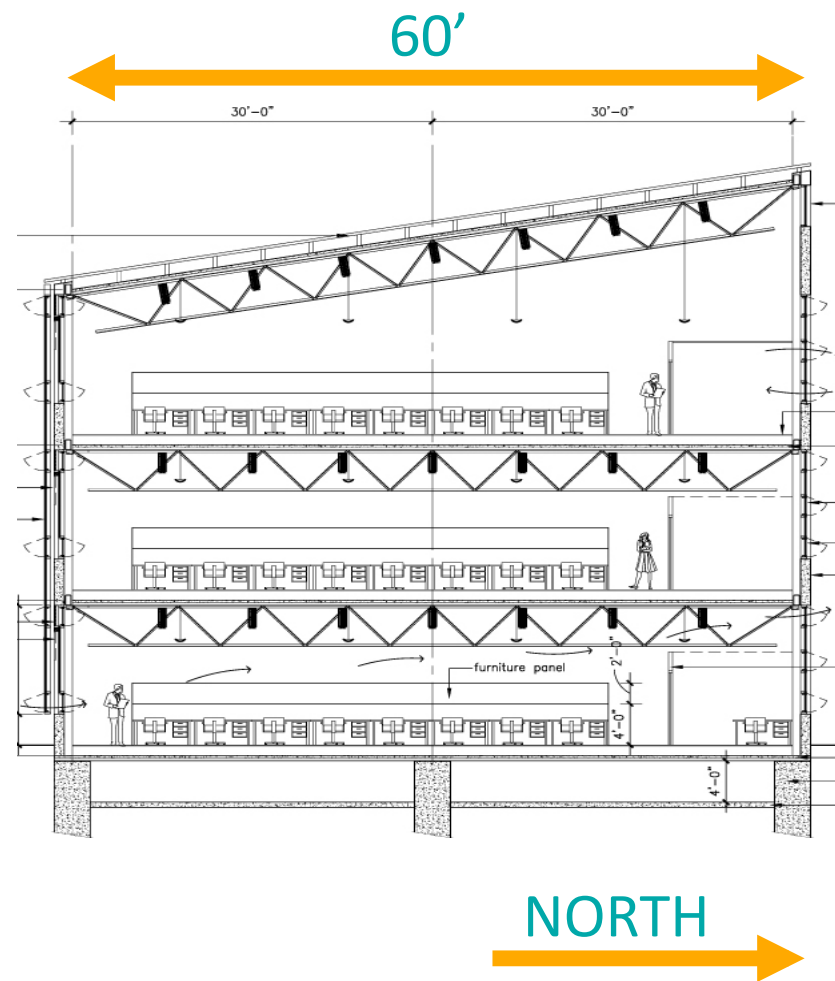
- Open and private office space
- Data center
- Conference rooms
- Library
- Exercise room
- Café



# Design Response – Competition Phase

## Daylighting

- Radiance modeling determined maximum allowable section depth (N/S)
- Achieves 25fc across majority of main wing floor plate (noon, equinox, clear sky), satisfying LEED iEQ 8.1 requirement

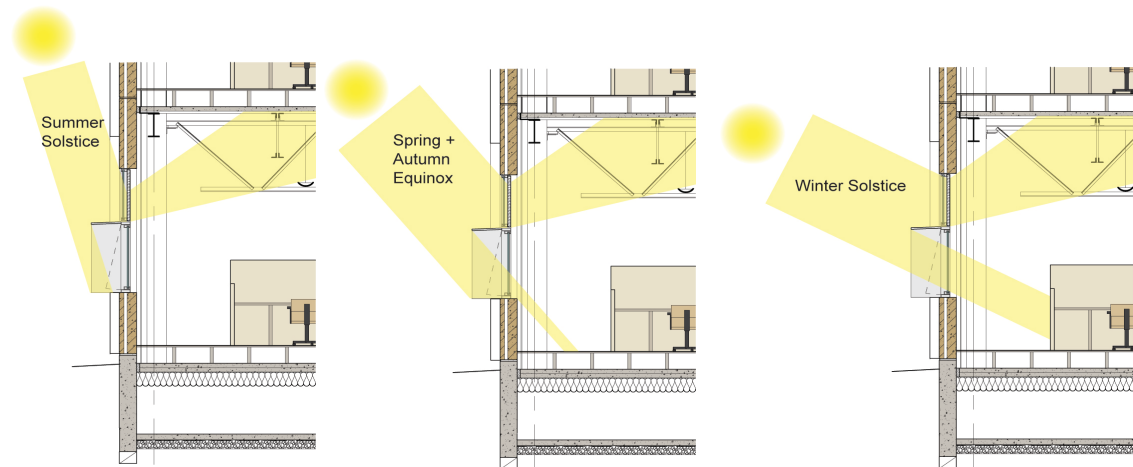


# Design Response – Competition Phase

---

## Daylighting

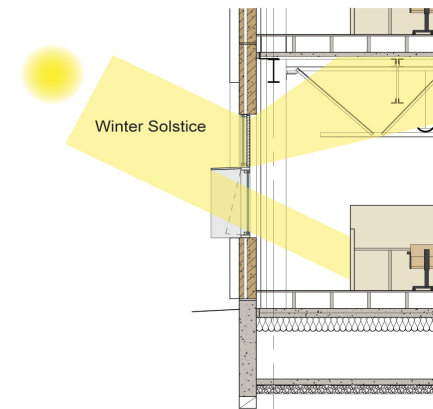
- Punched windows with “daylight” and “view” panes
- Daylight redirecting devices (Lightlouver) on daylight glazing
- Simple fixed overhang/vertical fin devices on vision glazing (ties into natural ventilation requirement)
- Office furniture





# Design Response – Competition Phase

- Overhang sized to work in conjunction with furniture partition heights to control direct sun on work surfaces
- Entire space programming responsive to and supporting daylighting



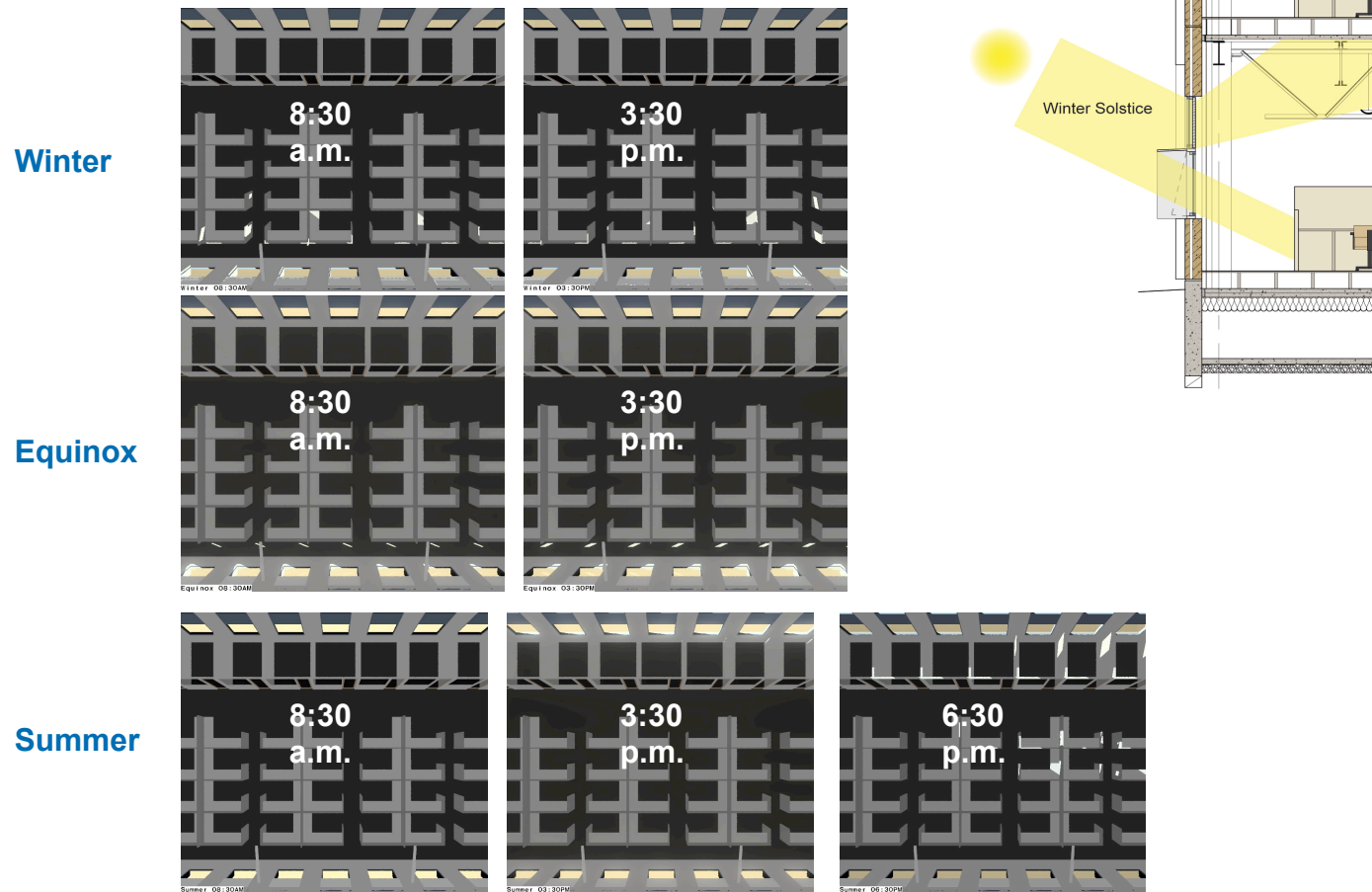
# Design Development

---

- Confirmation of design
  - Overhangs blocking direct sun?
  - Adequate daylight throughout year?
  - Satisfy LEED iEQ8.1 requirement?
    - 25FC, 75% task area, Equinox/noon/clear sky
- Inform lighting control zones
- Estimate lighting control response for energy analysis
- Qualitative evaluation
  - Several space types

# Design Development

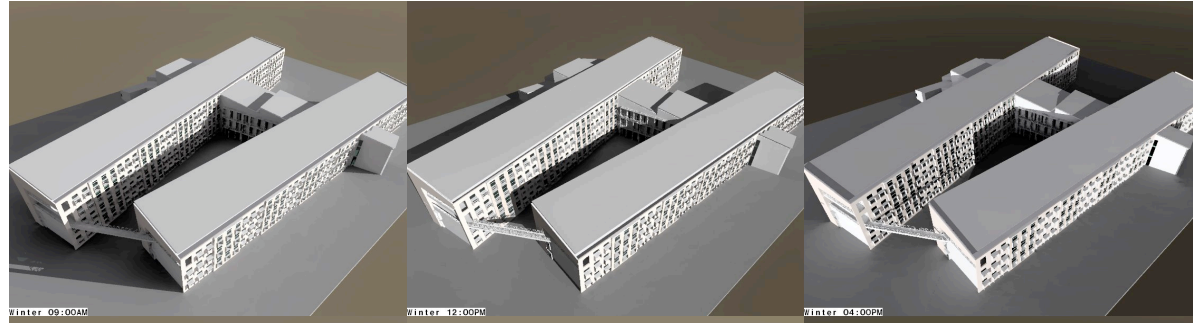
- Overhang Performance
  - Minimal direct sun on desks



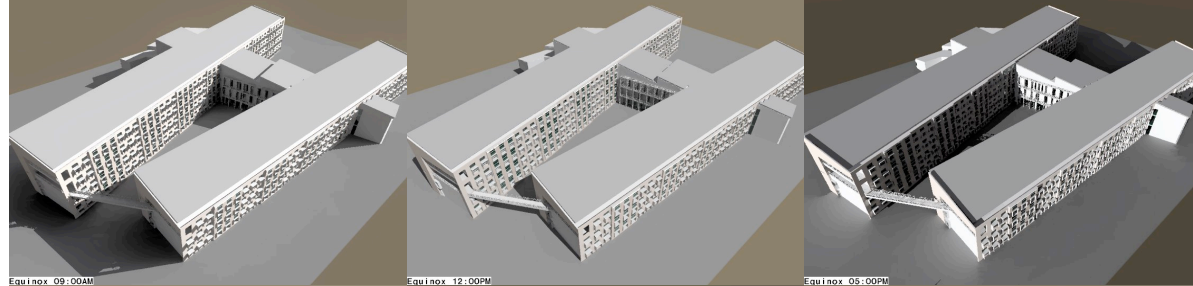


# Design Development

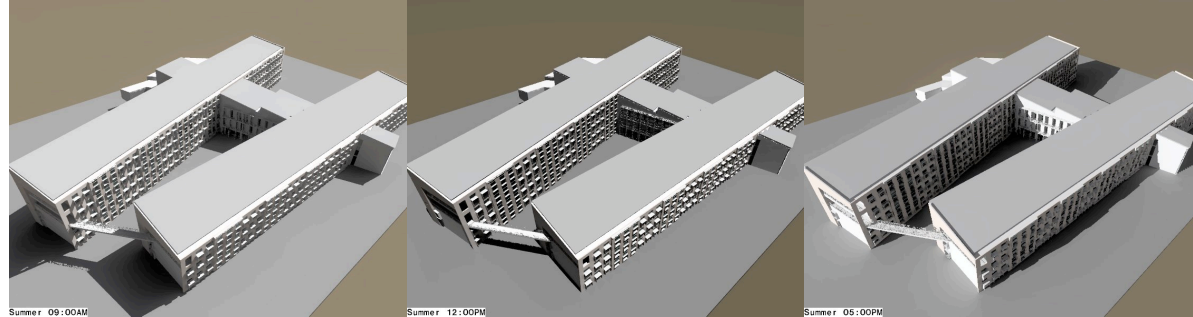
Winter



Equinox



Summer



9:00 a.m.

12:00 p.m.

5:00 p.m.

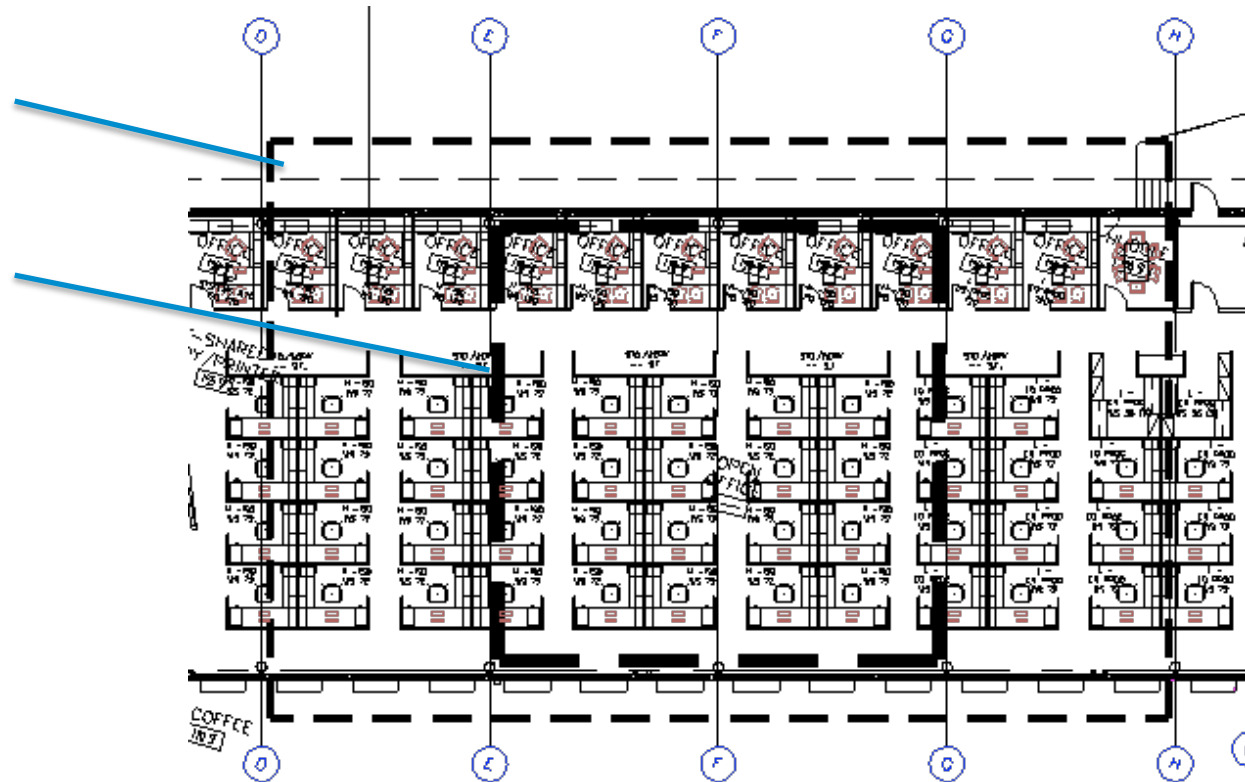
# Design Development

## Main wings – interior analysis

- Created detailed Radiance model
- Used .ies photometric files to model Lightlouver performance

Model extents

Calc grid area



# Design Development

E: 25 fc Illuminance | new\_kc\_wp\_3\_21\_12\_1\_

|    |    |      |      |      |    |    |      |      |      |    |    |      |      |      |    |    |      |      |      |    |    |      |      |      |    |    |      |      |      |    |
|----|----|------|------|------|----|----|------|------|------|----|----|------|------|------|----|----|------|------|------|----|----|------|------|------|----|----|------|------|------|----|
| 60 | 32 | 47   | 55   | 53   | 39 | 32 | 47   | 55   | 53   | 39 | 31 | 48   | 56   | 53   | 38 | 33 | 46   | 56   | 53   | 39 | 32 | 48   | 54   | 55   | 39 | 32 | 47   | 55   | 55   | 45 |
| 58 | 41 | 50   | 54   | 53   | 45 | 40 | 50   | 55   | 54   | 46 | 40 | 50   | 55   | 53   | 44 | 41 | 51   | 55   | 53   | 46 | 42 | 51   | 56   | 55   | 47 | 39 | 51   | 56   | 57   | 53 |
| 56 | 41 | 49   | 51   | 50   | 44 | 39 | 48   | 51   | 50   | 44 | 41 | 47   | 51   | 49   | 44 | 40 | 47   | 51   | 50   | 46 | 42 | 49   | 51   | 48   | 45 | 41 | 48   | 52   | 53   | 53 |
| 54 | 38 | 44   | 46   | 45   | 40 | 37 | 44   | 46   | 45   | 40 | 37 | 42   | 46   | 44   | 40 | 37 | 42   | 47   | 46   | 40 | 40 | 44   | 47   | 46   | 43 | 39 | 44   | 48   | 48   | 49 |
| 52 | 36 | 40   | 43   | 41   | 36 | 34 | 40   | 43   | 42   | 38 | 33 | 40   | 42   | 41   | 37 | 37 | 39   | 42   | 43   | 36 | 36 | 40   | 42   | 42   | 38 | 36 | 41   | 44   | 46   | 47 |
| 50 | 33 | 37   | 38   | 37   | 34 | 37 | 36   | 38   | 38   | 34 | 32 | 36   | 37   | 37   | 32 | 32 | 37   | 38   | 38   | 34 | 34 | 37   | 39   | 39   | 34 | 33 | 37   | 39   | 42   | 43 |
| 48 | 31 | 33   | 35   | 30   | 31 | 32 | 33   | 35   | 29   | 31 | 32 | 33   | 32   | 31   | 30 | 32 | 32   | 34   | 29   | 32 | 32 | 32   | 33   | 29   | 32 | 31 | 34   | 35   | 31   | 36 |
| 46 | 33 | 35   | 35   | 32   | 34 | 34 | 34   | 35   | 34   | 34 | 35 | 33   | 33   | 33   | 33 | 34 | 35   | 34   | 34   | 33 | 32 | 34   | 34   | 34   | 32 | 35 | 32   | 36   | 33   | 33 |
| 44 | 33 | 34   | 35   | 35   | 32 | 35 | 34   | 33   | 33   | 35 | 34 | 34   | 35   | 33   | 36 | 37 | 35   | 35   | 34   | 37 | 37 | 35   | 35   | 35   | 34 | 34 | 34   | 34   | 34   | 34 |
| 42 | 36 | 37   | 36   | 35   | 37 | 35 | 35   | 35   | 34   | 35 | 36 | 36   | 35   | 35   | 35 | 37 | 36   | 37   | 36   | 36 | 37 | 37   | 35   | 36   | 35 | 33 | 37   | 34   | 34   | 34 |
| 40 | 37 | 38   | 38   | 37   | 36 | 36 | 36   | 36   | 34   | 37 | 38 | 38   | 39   | 38   | 37 | 35 | 35   | 38   | 37   | 36 | 36 | 37   | 36   | 37   | 36 | 37 | 38   | 37   | 35   | 36 |
| 38 | 38 | 38   | 40   | 38   | 39 | 39 | 41   | 38   | 39   | 39 | 39 | 38   | 40   | 39   | 36 | 38 | 38   | 37   | 38   | 38 | 37 | 39   | 37   | 37   | 37 | 36 | 38   | 38   | 37   | 37 |
| 36 | 37 | 37   | 41   | 41   | 39 | 39 | 43   | 43   | 41   | 40 | 38 | 38   | 38   | 38   | 42 | 39 | 40   | 40   | 41   | 39 | 38 | 41   | 41   | 37   | 39 | 37 | 39   | 38   | 38   | 39 |
| 34 | 44 | 43   | 44   | 42   | 41 | 43 | 44   | 42   | 43   | 43 | 39 | 39   | 43   | 40   | 40 | 43 | 42   | 42   | 41   | 41 | 45 | 44   | 45   | 41   | 45 | 41 | 41   | 40   | 40   | 41 |
| 32 | 48 | 49   | 45   | 49   | 47 | 46 | 46   | 44   | 45   | 47 | 47 | 48   | 46   | 48   | 48 | 46 | 46   | 45   | 45   | 49 | 45 | 47   | 47   | 47   | 45 | 43 | 42   | 42   | 45   | 45 |
| 30 | 49 | 50   | 49   | 50   | 49 | 48 | 48   | 48   | 49   | 48 | 48 | 51   | 48   | 47   | 51 | 48 | 50   | 49   | 47   | 51 | 52 | 51   | 51   | 50   | 49 | 48 | 48   | 47   | 48   | 47 |
| 28 | 55 | 50   | 50   | 50   | 53 | 56 | 56   | 57   | 52   | 52 | 51 | 51   | 54   | 48   | 53 | 54 | 56   | 56   | 59   | 55 | 55 | 56   | 56   | 53   | 51 | 54 | 51   | 51   | 50   | 50 |
| 26 | 60 | 56   | 64   | 53   | 59 | 60 | 63   | 56   | 55   | 54 | 55 | 62   | 58   | 59   | 57 | 63 | 57   | 60   | 54   | 63 | 57 | 57   | 60   | 62   | 52 | 58 | 59   | 55   | 57   | 57 |
| 24 | 64 | 64   | 63   | 63   | 66 | 63 | 67   | 67   | 67   | 67 | 66 | 65   | 61   | 68   | 70 | 60 | 59   | 59   | 59   | 68 | 67 | 66   | 63   | 69   | 61 | 64 | 60   | 61   | 62   | 67 |
| 22 | 71 | 68   | 76   | 72   | 66 | 64 | 75   | 71   | 63   | 70 | 71 | 69   | 68   | 70   | 71 | 76 | 71   | 70   | 66   | 72 | 63 | 65   | 67   | 69   | 63 | 67 | 69   | 66   | 70   | 64 |
| 20 | 72 | 75   | 76   | 70   | 69 | 76 | 74   | 80   | 74   | 76 | 74 | 82   | 71   | 72   | 80 | 70 | 76   | 75   | 74   | 72 | 75 | 74   | 73   | 77   | 70 | 76 | 77   | 77   | 71   | 73 |
| 18 | 83 | 79   | 82   | 82   | 77 | 81 | 79   | 78   | 86   | 81 | 80 | 79   | 85   | 82   | 75 | 79 | 76   | 72   | 69   | 74 | 80 | 78   | 80   | 80   | 71 | 71 | 68   | 78   | 79   | 79 |
| 16 | 84 | 79   | 79   | 93   | 85 | 89 | 84   | 74   | 80   | 82 | 84 | 78   | 84   | 86   | 85 | 80 | 98   | 83   | 79   | 87 | 83 | 79   | 88   | 85   | 88 | 76 | 78   | 77   | 77   | 80 |
| 14 | 77 | 90   | 85   | 87   | 86 | 89 | 86   | 85   | 80   | 82 | 89 | 91   | 89   | 90   | 85 | 86 | 87   | 91   | 86   | 76 | 82 | 87   | 83   | 89   | 82 | 85 | 76   | 77   | 80   | 90 |
| 12 | 79 | 88   | 79   | 81   | 85 | 86 | 78   | 87   | 88   | 81 | 91 | 82   | 92   | 84   | 81 | 88 | 84   | 87   | 86   | 81 | 82 | 80   | 82   | 81   | 83 | 83 | 84   | 82   | 80   | 81 |
| 10 | 85 | 86   | 89   | 80   | 84 | 79 | 84   | 82   | 83   | 84 | 85 | 87   | 85   | 76   | 78 | 86 | 82   | 85   | 81   | 82 | 79 | 82   | 83   | 84   | 78 | 86 | 88   | 82   | 84   | 84 |
| 8  | 75 | 85   | 78   | 81   | 81 | 80 | 79   | 86   | 80   | 85 | 81 | 82   | 85   | 85   | 85 | 87 | 86   | 86   | 85   | 86 | 79 | 80   | 82   | 83   | 79 | 80 | 84   | 77   | 83   | 81 |
| 6  | 78 | 86   | 87   | 83   | 76 | 74 | 80   | 79   | 86   | 78 | 73 | 81   | 81   | 83   | 79 | 77 | 83   | 86   | 86   | 76 | 79 | 79   | 82   | 86   | 75 | 74 | 84   | 82   | 86   | 78 |
| 4  | 70 | 90   | 101  | 101  | 81 | 65 | 88   | 98   | 96   | 79 | 65 | 88   | 100  | 99   | 80 | 74 | 90   | 98   | 95   | 79 | 71 | 87   | 105  | 98   | 75 | 67 | 88   | 106  | 97   | 80 |
| 2  | 58 | 1831 | 1836 | 1838 | 62 | 56 | 1824 | 1838 | 1833 | 55 | 58 | 1828 | 1834 | 1833 | 62 | 62 | 1832 | 1840 | 1835 | 60 | 59 | 1830 | 1837 | 1836 | 60 | 55 | 1829 | 1840 | 1839 | 58 |
|    | 2  | 4    | 6    | 8    | 10 | 12 | 14   | 16   | 18   | 20 | 22 | 24   | 26   | 28   | 30 | 32 | 34   | 36   | 38   | 40 | 42 | 44   | 46   | 48   | 50 | 52 | 54   | 56   | 58   | 60 |

LEED-qualifying Area  
210 153 153 136 652 100%  
210 153 153 136 652

NORTH

SOUTH



LEED Analysis - Typical Floor



# Design Development

E: 25 fc Illuminance new\_bc\_top\_wp\_3\_21\_12\_1

|    |    |      |      |      |    |    |      |      |      |    |    |      |      |      |    |    |      |      |      |    |    |      |      |      |    |    |      |      |      |    |
|----|----|------|------|------|----|----|------|------|------|----|----|------|------|------|----|----|------|------|------|----|----|------|------|------|----|----|------|------|------|----|
| 60 | 41 | 58   | 66   | 64   | 49 | 42 | 58   | 66   | 64   | 48 | 41 | 57   | 64   | 64   | 47 | 39 | 57   | 65   | 64   | 49 | 41 | 58   | 66   | 64   | 50 | 40 | 57   | 65   | 65   | 55 |
| 58 | 52 | 64   | 71   | 69   | 62 | 54 | 65   | 72   | 69   | 60 | 52 | 67   | 73   | 68   | 58 | 52 | 65   | 72   | 71   | 60 | 52 | 66   | 71   | 68   | 60 | 52 | 65   | 72   | 72   | 69 |
| 56 | 56 | 68   | 71   | 70   | 62 | 55 | 67   | 70   | 69   | 63 | 55 | 67   | 72   | 71   | 61 | 55 | 67   | 71   | 71   | 62 | 54 | 66   | 71   | 69   | 63 | 56 | 66   | 73   | 75   | 75 |
| 54 | 54 | 64   | 68   | 69   | 62 | 55 | 64   | 70   | 69   | 61 | 57 | 65   | 69   | 68   | 60 | 55 | 63   | 68   | 69   | 61 | 55 | 63   | 70   | 69   | 61 | 56 | 65   | 71   | 75   | 76 |
| 52 | 54 | 61   | 68   | 65   | 60 | 54 | 62   | 67   | 66   | 59 | 54 | 61   | 66   | 67   | 58 | 54 | 62   | 65   | 65   | 59 | 55 | 62   | 66   | 66   | 59 | 54 | 62   | 68   | 72   | 72 |
| 50 | 51 | 61   | 64   | 63   | 56 | 52 | 59   | 63   | 64   | 56 | 53 | 59   | 62   | 61   | 55 | 51 | 59   | 65   | 62   | 57 | 51 | 59   | 63   | 62   | 56 | 53 | 61   | 66   | 69   | 70 |
| 48 | 46 | 53   | 55   | 44   | 48 | 54 | 51   | 56   | 43   | 48 | 52 | 51   | 54   | 44   | 49 | 47 | 52   | 54   | 45   | 48 | 48 | 51   | 55   | 42   | 48 | 47 | 55   | 55   | 56   | 54 |
| 46 | 56 | 53   | 53   | 52   | 55 | 55 | 56   | 55   | 54   | 54 | 53 | 55   | 53   | 54   | 52 | 52 | 53   | 54   | 53   | 51 | 54 | 55   | 53   | 53   | 54 | 55 | 55   | 56   | 55   | 49 |
| 44 | 55 | 55   | 55   | 58   | 54 | 55 | 57   | 59   | 58   | 53 | 54 | 54   | 54   | 58   | 59 | 62 | 58   | 55   | 57   | 59 | 61 | 55   | 55   | 54   | 52 | 54 | 55   | 56   | 57   | 55 |
| 42 | 59 | 56   | 55   | 57   | 58 | 60 | 57   | 57   | 58   | 58 | 57 | 59   | 59   | 58   | 61 | 61 | 58   | 58   | 60   | 59 | 60 | 59   | 57   | 60   | 60 | 60 | 60   | 56   | 57   | 55 |
| 40 | 58 | 58   | 58   | 58   | 58 | 59 | 59   | 58   | 57   | 56 | 56 | 57   | 58   | 59   | 59 | 59 | 58   | 59   | 61   | 60 | 60 | 59   | 56   | 56   | 58 | 58 | 59   | 59   | 57   | 57 |
| 38 | 54 | 55   | 56   | 56   | 57 | 57 | 57   | 57   | 56   | 57 | 60 | 55   | 55   | 56   | 58 | 58 | 56   | 57   | 59   | 59 | 58 | 58   | 56   | 55   | 55 | 55 | 55   | 57   | 57   | 57 |
| 36 | 53 | 54   | 55   | 55   | 55 | 57 | 57   | 56   | 56   | 58 | 58 | 55   | 55   | 56   | 56 | 56 | 56   | 56   | 56   | 58 | 59 | 59   | 55   | 54   | 54 | 53 | 54   | 55   | 55   | 55 |
| 34 | 55 | 55   | 53   | 54   | 54 | 54 | 56   | 56   | 55   | 55 | 56 | 57   | 53   | 55   | 56 | 55 | 55   | 55   | 55   | 55 | 58 | 58   | 53   | 53   | 54 | 56 | 55   | 53   | 54   | 55 |
| 32 | 53 | 53   | 56   | 56   | 56 | 57 | 57   | 57   | 54   | 55 | 54 | 56   | 57   | 56   | 55 | 55 | 55   | 55   | 55   | 55 | 52 | 58   | 58   | 52   | 51 | 55 | 54   | 53   | 53   | 54 |
| 30 | 54 | 56   | 55   | 55   | 55 | 54 | 56   | 56   | 53   | 52 | 51 | 51   | 57   | 55   | 57 | 58 | 55   | 55   | 55   | 54 | 51 | 53   | 57   | 57   | 50 | 49 | 52   | 52   | 51   | 50 |
| 28 | 53 | 53   | 54   | 54   | 55 | 53 | 53   | 51   | 55   | 50 | 50 | 56   | 56   | 58   | 57 | 56 | 55   | 55   | 57   | 56 | 54 | 53   | 53   | 53   | 53 | 51 | 52   | 52   | 50   | 50 |
| 26 | 51 | 51   | 53   | 53   | 53 | 52 | 53   | 51   | 51   | 54 | 55 | 57   | 57   | 53   | 58 | 57 | 53   | 53   | 53   | 55 | 55 | 58   | 57   | 52   | 52 | 53 | 53   | 52   | 52   | 52 |
| 24 | 51 | 52   | 53   | 53   | 51 | 51 | 53   | 55   | 58   | 58 | 55 | 56   | 54   | 53   | 56 | 55 | 54   | 54   | 52   | 52 | 56 | 55   | 56   | 55   | 50 | 54 | 54   | 54   | 55   | 51 |
| 22 | 53 | 53   | 55   | 54   | 55 | 51 | 51   | 55   | 58   | 57 | 54 | 54   | 51   | 53   | 58 | 58 | 58   | 53   | 54   | 54 | 57 | 53   | 54   | 53   | 55 | 57 | 56   | 57   | 54   | 53 |
| 20 | 53 | 53   | 57   | 57   | 55 | 54 | 52   | 54   | 54   | 56 | 55 | 52   | 55   | 54   | 54 | 52 | 58   | 58   | 53   | 55 | 56 | 55   | 56   | 55   | 55 | 51 | 56   | 55   | 51   | 51 |
| 18 | 54 | 52   | 56   | 57   | 56 | 52 | 51   | 54   | 53   | 54 | 55 | 54   | 58   | 59   | 54 | 51 | 55   | 57   | 55   | 56 | 55 | 55   | 54   | 53   | 53 | 54 | 50   | 53   | 54   | 55 |
| 16 | 53 | 55   | 58   | 58   | 58 | 51 | 53   | 56   | 55   | 55 | 54 | 53   | 53   | 55   | 54 | 56 | 57   | 58   | 53   | 55 | 55 | 56   | 52   | 52   | 53 | 54 | 54   | 55   | 57   | 55 |
| 14 | 56 | 57   | 57   | 54   | 57 | 56 | 54   | 53   | 53   | 53 | 54 | 54   | 59   | 55   | 57 | 57 | 57   | 57   | 55   | 57 | 57 | 56   | 56   | 55   | 53 | 54 | 54   | 54   | 57   | 56 |
| 12 | 55 | 56   | 53   | 54   | 56 | 55 | 55   | 52   | 53   | 55 | 54 | 55   | 58   | 55   | 58 | 56 | 56   | 55   | 53   | 52 | 56 | 55   | 55   | 54   | 55 | 55 | 55   | 54   | 54   | 54 |
| 10 | 58 | 58   | 54   | 54   | 59 | 52 | 53   | 54   | 56   | 55 | 55 | 56   | 53   | 54   | 54 | 56 | 56   | 54   | 53   | 52 | 56 | 55   | 53   | 53   | 53 | 58 | 55   | 54   | 54   | 52 |
| 8  | 56 | 58   | 60   | 56   | 53 | 53 | 54   | 57   | 58   | 57 | 59 | 57   | 57   | 57   | 57 | 56 | 57   | 59   | 57   | 55 | 57 | 57   | 56   | 59   | 55 | 53 | 53   | 57   | 61   | 54 |
| 6  | 56 | 60   | 67   | 66   | 57 | 56 | 63   | 66   | 64   | 60 | 56 | 61   | 69   | 65   | 60 | 55 | 63   | 65   | 64   | 63 | 58 | 61   | 67   | 62   | 63 | 58 | 63   | 66   | 63   | 59 |
| 4  | 54 | 75   | 88   | 82   | 63 | 53 | 74   | 87   | 84   | 63 | 54 | 75   | 87   | 81   | 65 | 52 | 76   | 83   | 83   | 64 | 52 | 75   | 84   | 83   | 62 | 54 | 72   | 82   | 82   | 65 |
| 2  | 43 | 1818 | 1827 | 1829 | 49 | 44 | 1818 | 1825 | 1821 | 46 | 45 | 1814 | 1827 | 1822 | 48 | 44 | 1818 | 1822 | 1820 | 49 | 46 | 1819 | 1822 | 1820 | 48 | 46 | 1814 | 1820 | 1819 | 45 |

LEED-qualifying Area  
210 153 153 136 652 1  
210 153 153 136 652

NORTH

SOUTH



## LEED Analysis - Top Floor

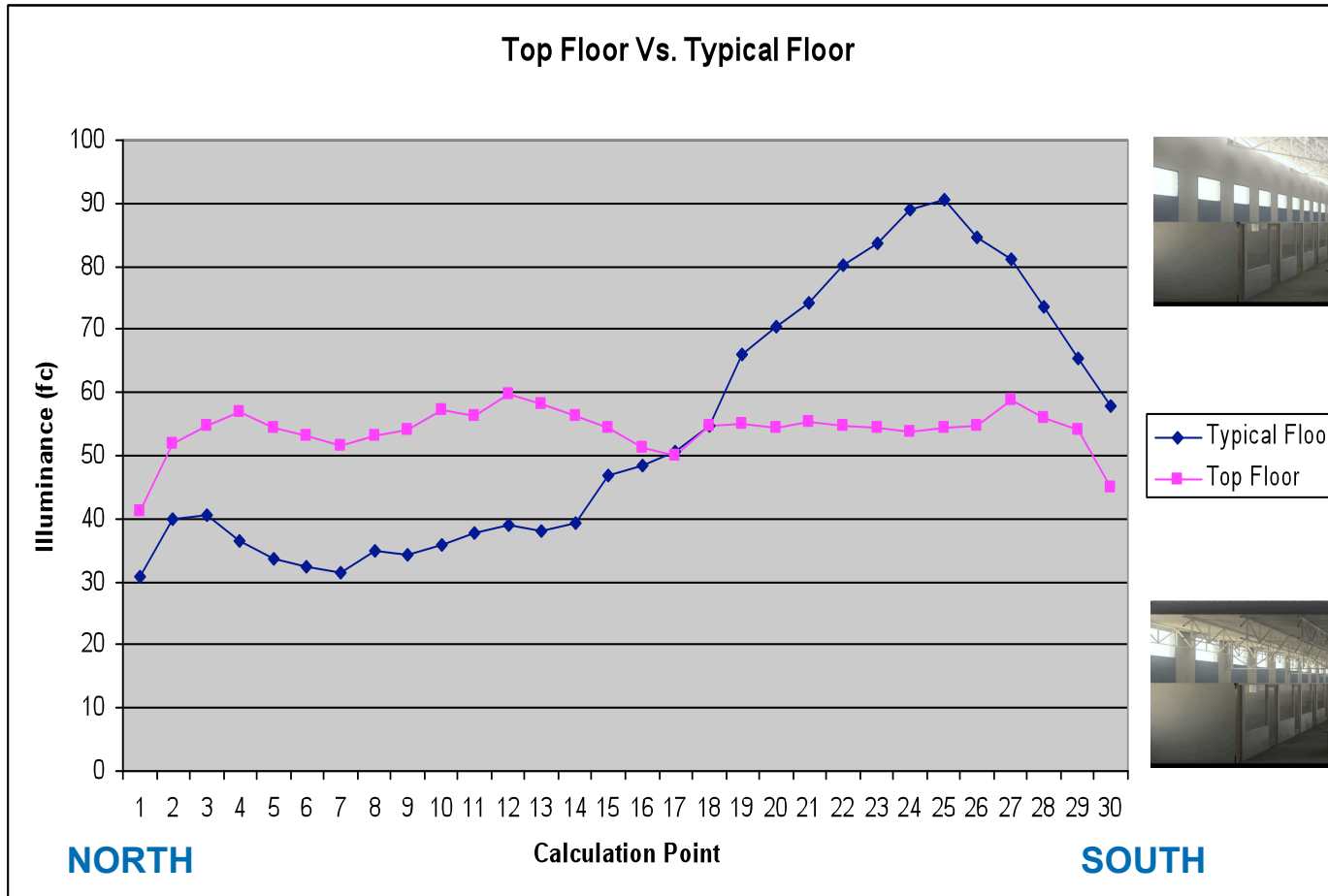
# Design Development

## Top vs. Typical Floor Illuminance Distribution



# Design Development

## Top vs. Typical Floor Illuminance Distribution



◆ Typical Floor  
■ Top Floor

# Design Development

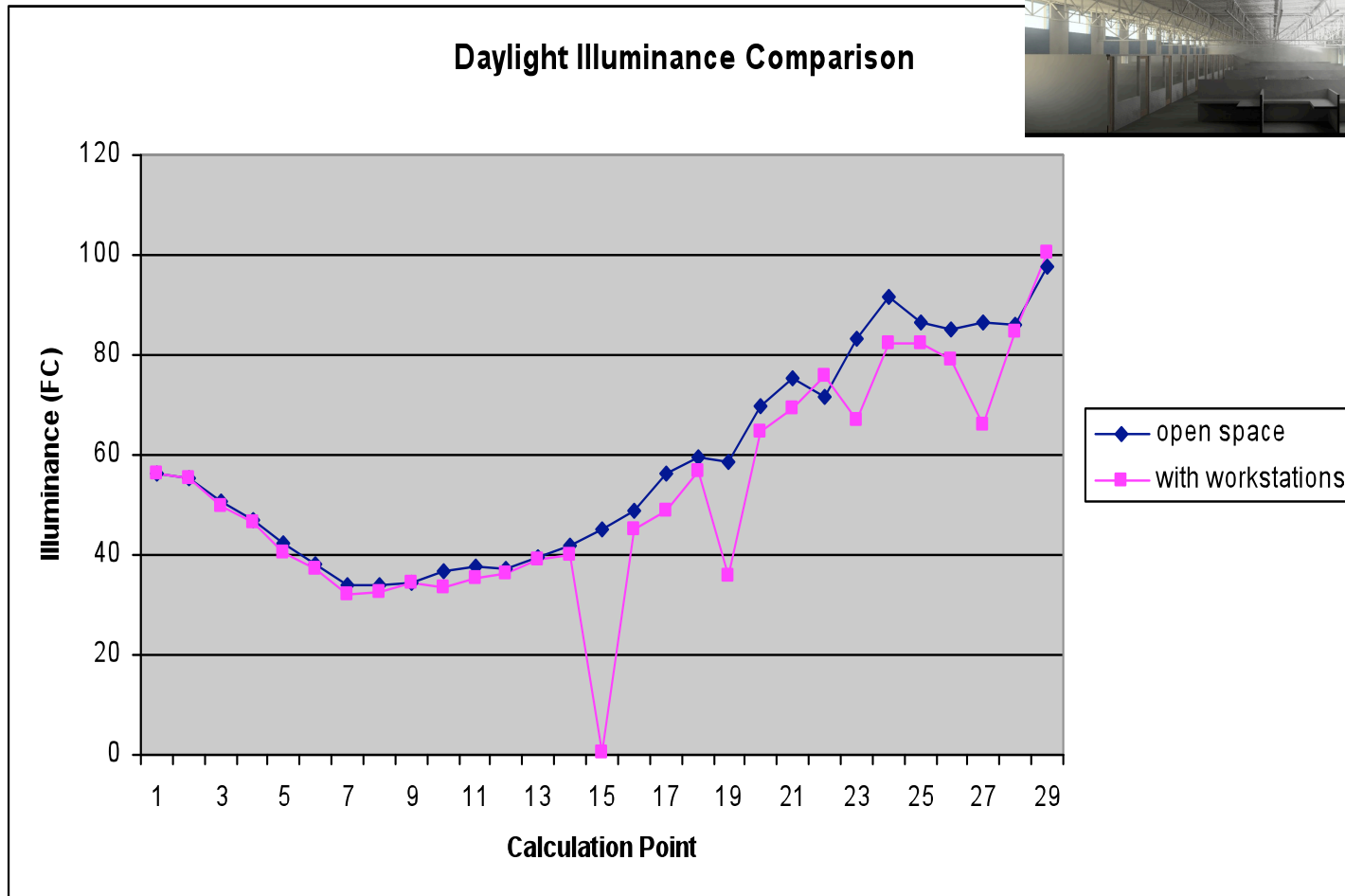
## LEED Analysis vs. Actual Space Conditions

|    |    |      |      |      |    |    |      |      |      |    |    |      |      |      |    |    |      |      |      |    |    |      |      |      |    |    |      |      |      |    |
|----|----|------|------|------|----|----|------|------|------|----|----|------|------|------|----|----|------|------|------|----|----|------|------|------|----|----|------|------|------|----|
| 60 | 32 | 46   | 56   | 53   | 38 | 32 | 48   | 55   | 54   | 39 | 32 | 47   | 55   | 52   | 38 | 32 | 48   | 57   | 53   | 38 | 32 | 48   | 55   | 54   | 40 | 33 | 46   | 55   | 54   | 44 |
| 58 | 40 | 51   | 56   | 53   | 44 | 41 | 49   | 56   | 54   | 46 | 40 | 50   | 54   | 52   | 45 | 39 | 51   | 55   | 53   | 46 | 41 | 50   | 56   | 55   | 45 | 42 | 52   | 55   | 55   | 53 |
| 56 | 40 | 47   | 51   | 49   | 44 | 41 | 48   | 50   | 48   | 43 | 39 | 47   | 51   | 47   | 43 | 40 | 47   | 50   | 48   | 43 | 40 | 48   | 51   | 50   | 44 | 41 | 48   | 52   | 53   | 52 |
| 54 | 39 | 43   | 46   | 46   | 40 | 38 | 43   | 46   | 45   | 40 | 37 | 42   | 44   | 44   | 40 | 37 | 41   | 47   | 45   | 39 | 37 | 43   | 47   | 46   | 39 | 38 | 44   | 48   | 48   | 49 |
| 52 | 34 | 39   | 43   | 41   | 37 | 35 | 39   | 43   | 40   | 37 | 34 | 39   | 41   | 39   | 36 | 35 | 39   | 40   | 42   | 36 | 35 | 40   | 44   | 42   | 38 | 35 | 40   | 43   | 46   | 45 |
| 50 | 33 | 36   | 38   | 39   | 33 | 32 | 37   | 38   | 38   | 33 | 30 | 35   | 37   | 35   | 33 | 30 | 35   | 37   | 36   | 33 | 32 | 35   | 38   | 38   | 34 | 34 | 36   | 41   | 42   | 42 |
| 48 | 30 | 32   | 33   | 32   | 31 | 29 | 33   | 32   | 29   | 31 | 29 | 31   | 32   | 30   | 29 | 30 | 31   | 32   | 28   | 30 | 30 | 32   | 32   | 29   | 30 | 30 | 32   | 33   | 29   | 33 |
| 46 | 33 | 32   | 33   | 32   | 33 | 34 | 34   | 33   | 33   | 33 | 32 | 33   | 32   | 32   | 32 | 35 | 33   | 33   | 33   | 31 | 33 | 33   | 32   | 32   | 31 | 34 | 32   | 33   | 32   | 33 |
| 44 | 34 | 35   | 35   | 34   | 33 | 34 | 33   | 33   | 33   | 33 | 36 | 33   | 32   | 34   | 35 | 34 | 34   | 33   | 33   | 33 | 33 | 33   | 32   | 32   | 34 | 32 | 32   | 33   | 32   | 32 |
| 42 | 33 | 34   | 34   | 35   | 33 | 33 | 35   | 35   | 33   | 35 | 36 | 32   | 36   | 35   | 34 | 33 | 34   | 34   | 32   | 35 | 37 | 32   | 34   | 34   | 31 | 34 | 34   | 33   | 33   | 34 |
| 40 | 34 | 36   | 35   | 31   | 29 | 35 | 37   | 34   | 34   | 35 | 36 | 34   | 35   | 36   | 33 | 27 | 34   | 35   | 35   | 36 | 36 | 36   | 36   | 35   | 35 | 34 | 30   | 34   | 34   | 36 |
| 38 | 38 | 37   | 35   | 31   | 29 | 35 | 37   | 35   | 34   | 35 | 35 | 34   | 36   | 34   | 34 | 28 | 34   | 36   | 37   | 36 | 35 | 36   | 37   | 36   | 35 | 34 | 32   | 30   | 33   | 36 |
| 36 | 38 | 40   | 37   | 29   | 29 | 34 | 38   | 38   | 35   | 37 | 32 | 37   | 36   | 36   | 33 | 30 | 35   | 39   | 39   | 36 | 36 | 39   | 31   | 40   | 36 | 35 | 34   | 30   | 36   | 37 |
| 34 | 39 | 41   | 37   | 30   | 31 | 36 | 35   | 40   | 29   | 40 | 31 | 33   | 37   | 37   | 35 | 29 | 37   | 40   | 41   | 36 | 37 | 39   | 32   | 38   | 37 | 35 | 31   | 31   | 37   | 36 |
| 32 | 0  | 0    | 0    | 1    | 1  | 0  | 0    | 0    | 0    | 40 | 40 | 0    | 0    | 0    | 0  | 2  | 0    | 0    | 0    | 0  | 44 | 44   | 0    | 0    | 0  | 0  | 1    | 0    | 0    | 0  |
| 30 | 46 | 44   | 46   | 35   | 36 | 42 | 45   | 44   | 48   | 48 | 46 | 42   | 45   | 44   | 42 | 35 | 45   | 45   | 46   | 45 | 45 | 49   | 46   | 48   | 45 | 45 | 39   | 37   | 44   | 45 |
| 28 | 49 | 47   | 51   | 39   | 38 | 51 | 51   | 52   | 45   | 51 | 47 | 47   | 51   | 54   | 43 | 43 | 50   | 49   | 53   | 48 | 51 | 46   | 43   | 54   | 51 | 47 | 44   | 43   | 48   | 49 |
| 26 | 57 | 54   | 54   | 45   | 43 | 49 | 53   | 53   | 49   | 53 | 46 | 53   | 57   | 57   | 55 | 43 | 53   | 57   | 60   | 52 | 46 | 55   | 48   | 55   | 58 | 51 | 48   | 43   | 51   | 52 |
| 24 | 39 | 34   | 44   | 31   | 29 | 36 | 42   | 36   | 28   | 59 | 55 | 33   | 39   | 36   | 34 | 26 | 34   | 36   | 40   | 32 | 56 | 60   | 32   | 33   | 35 | 32 | 31   | 29   | 36   | 38 |
| 22 | 67 | 62   | 67   | 51   | 54 | 62 | 71   | 68   | 73   | 71 | 69 | 67   | 67   | 59   | 62 | 45 | 60   | 65   | 68   | 70 | 67 | 64   | 61   | 67   | 66 | 64 | 58   | 53   | 64   | 63 |
| 20 | 76 | 70   | 68   | 58   | 56 | 69 | 72   | 73   | 69   | 69 | 67 | 68   | 64   | 78   | 62 | 54 | 66   | 69   | 69   | 68 | 71 | 70   | 66   | 72   | 66 | 70 | 57   | 55   | 64   | 76 |
| 18 | 77 | 80   | 74   | 54   | 57 | 72 | 72   | 73   | 70   | 73 | 61 | 77   | 75   | 79   | 73 | 65 | 71   | 76   | 71   | 71 | 72 | 73   | 63   | 76   | 77 | 71 | 67   | 59   | 72   | 76 |
| 16 | 73 | 73   | 77   | 52   | 57 | 77 | 80   | 75   | 60   | 77 | 65 | 69   | 82   | 76   | 71 | 48 | 64   | 67   | 71   | 72 | 74 | 76   | 57   | 71   | 70 | 70 | 61   | 60   | 65   | 72 |
| 14 | 81 | 78   | 81   | 66   | 60 | 76 | 83   | 83   | 82   | 82 | 79 | 80   | 79   | 82   | 75 | 68 | 77   | 82   | 80   | 78 | 80 | 82   | 76   | 84   | 77 | 77 | 73   | 65   | 77   | 76 |
| 12 | 81 | 80   | 80   | 66   | 60 | 70 | 84   | 82   | 79   | 88 | 81 | 76   | 80   | 71   | 76 | 58 | 79   | 83   | 74   | 77 | 80 | 86   | 84   | 79   | 73 | 71 | 63   | 64   | 70   | 87 |
| 10 | 80 | 77   | 74   | 60   | 60 | 72 | 76   | 73   | 68   | 80 | 64 | 71   | 70   | 71   | 74 | 62 | 68   | 79   | 69   | 68 | 76 | 79   | 60   | 81   | 75 | 68 | 66   | 65   | 73   | 72 |
| 8  | 63 | 65   | 70   | 67   | 56 | 60 | 72   | 64   | 64   | 78 | 64 | 63   | 66   | 69   | 66 | 53 | 65   | 66   | 63   | 57 | 76 | 74   | 66   | 67   | 66 | 65 | 53   | 56   | 64   | 64 |
| 6  | 70 | 80   | 84   | 84   | 79 | 68 | 79   | 86   | 82   | 76 | 75 | 81   | 85   | 87   | 77 | 72 | 75   | 85   | 79   | 72 | 78 | 78   | 84   | 81   | 76 | 72 | 75   | 83   | 82   | 77 |
| 4  | 69 | 88   | 101  | 95   | 80 | 70 | 90   | 109  | 98   | 77 | 67 | 91   | 106  | 99   | 85 | 67 | 94   | 101  | 102  | 77 | 67 | 84   | 101  | 102  | 81 | 69 | 92   | 101  | 98   | 83 |
| 2  | 54 | 1827 | 1834 | 1835 | 60 | 55 | 1833 | 1836 | 1835 | 58 | 59 | 1832 | 1848 | 1836 | 66 | 57 | 1829 | 1837 | 1836 | 58 | 62 | 1829 | 1845 | 1839 | 62 | 55 | 1828 | 1837 | 1834 | 59 |
|    | 2  | 4    | 6    | 8    | 10 | 12 | 14   | 16   | 18   | 20 | 22 | 24   | 26   | 28   | 30 | 32 | 34   | 36   | 38   | 40 | 42 | 44   | 46   | 48   | 50 | 52 | 54   | 56   | 58   | 60 |



# Design Development

## LEED Analysis (no furniture) vs. Actual Space Conditions



# Design Development

---

## Integrated Analysis – “What about the Energy Use?”

- LEED daylight credit “analysis” an inexact measurement of an incomplete performance metric
- “Point-in-time”, misses things (good and bad)
- Need to measure annual, whole-building energy-use impacts of daylight-responsive lighting controls
- Lightlouver devices not easily simulated on annual basis; ies files were generated with forward raytracing for specific times
- rtcontrib and climate-based daylight modeling (CBDM) workflows are the next frontier for this work

# Design Development

---

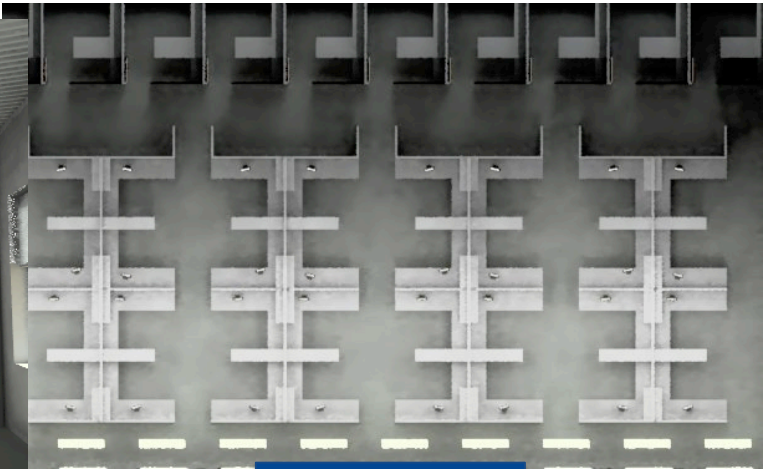
## Integrated Analysis – “What about the Energy Use?”

For the RSF calculations:

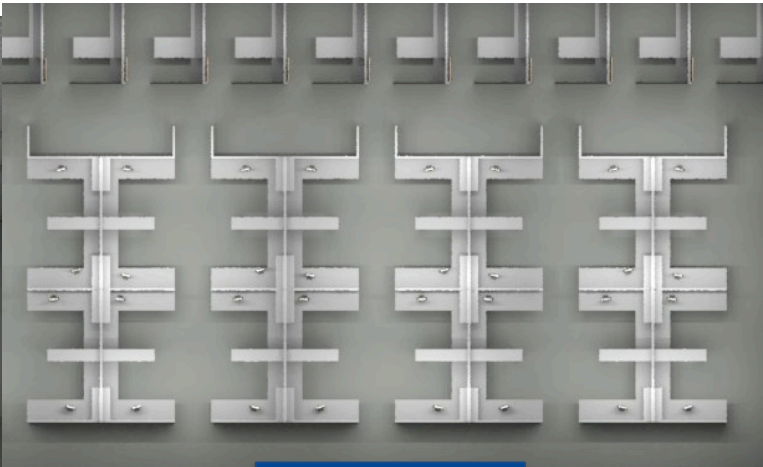
- Lightlouver geometry was explicitly modeled in Radiance
- Radiance’s light backwards raytracing was used (no mkillum, no photon map)
- Cranked up the rendering parameters, waited a long time, and STILL assumed there was a significant underestimation of the daylight contribution
- Used SPOT to perform annual simulation of daylight performance and dimming response, generated schedule “include file” for DOE2 energy analysis
- Energy modelers included SPOT schedule in DOE2 energy runs

# Construction Documents

## Detailed Renderings



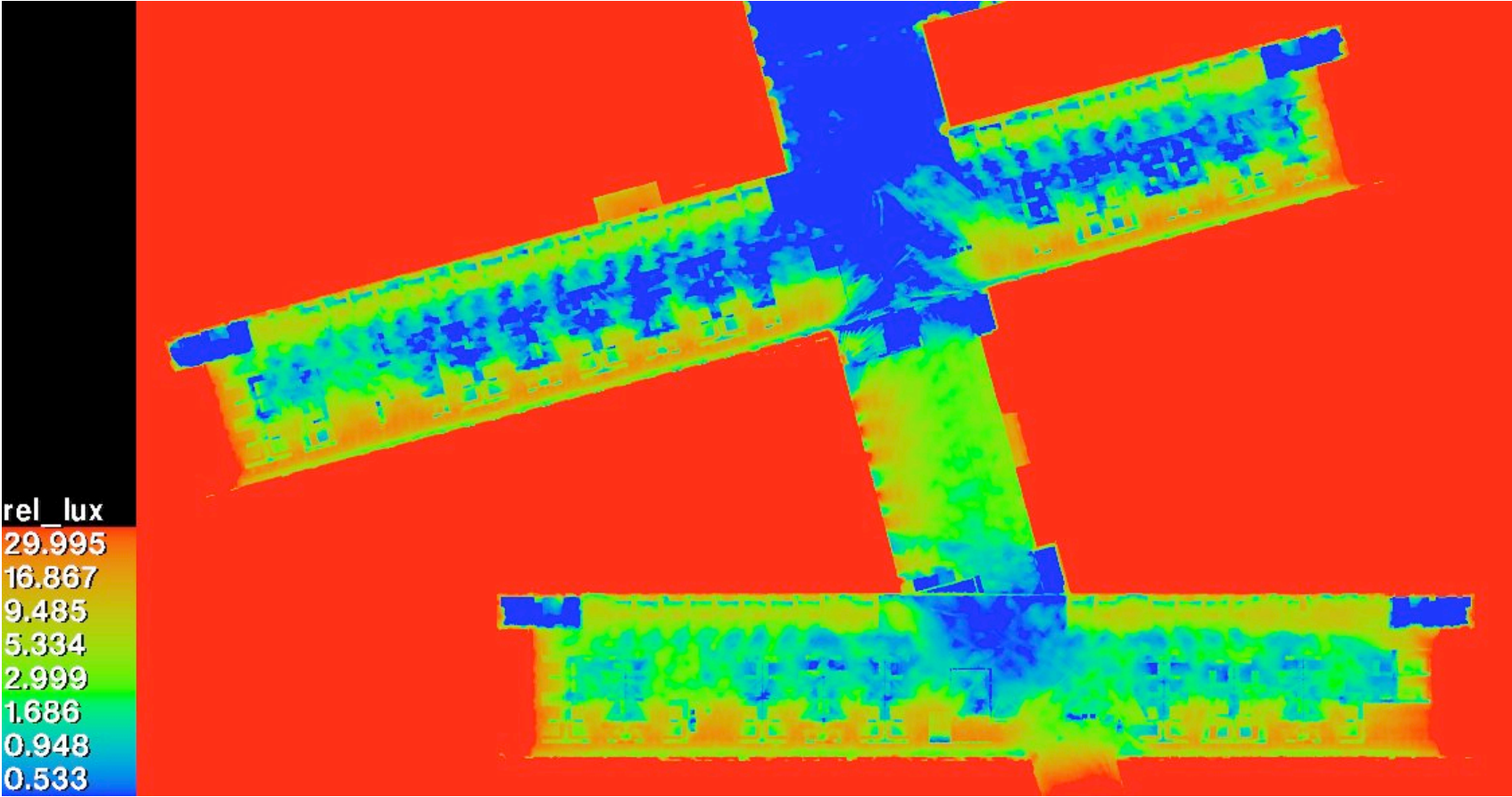
Day



Night

# Construction Documents

## Lighting Control Zones



Annual Daylight Availability - Third Floor

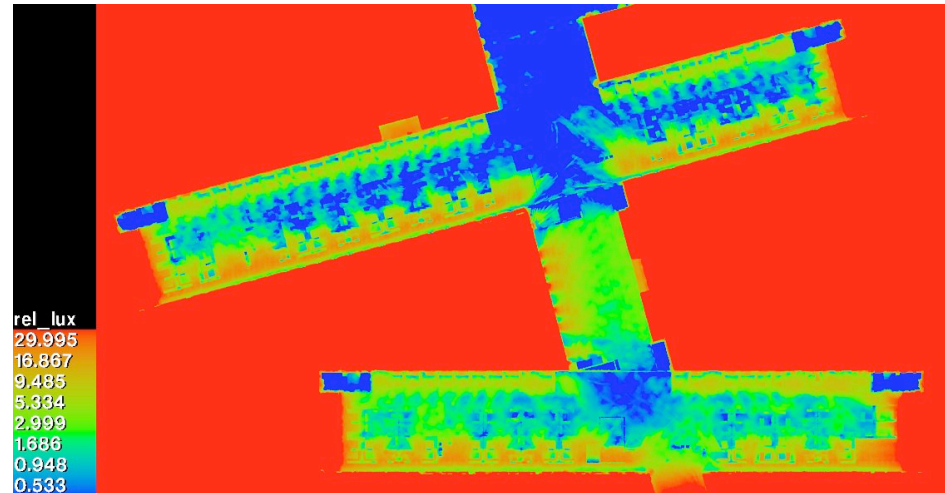


# Construction Documents

---

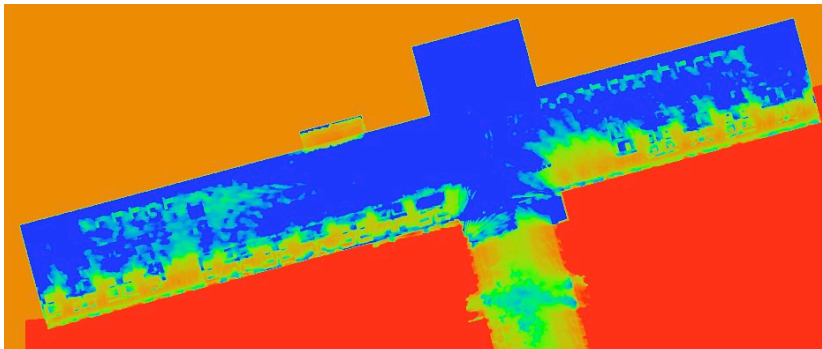
## Lighting Control Zones

- Logical control zoning was determined through annual simulation
- Francesco Anselmo's "radmap" used for annual sky simulations
- Prevailing daylight availability dictated control zoning

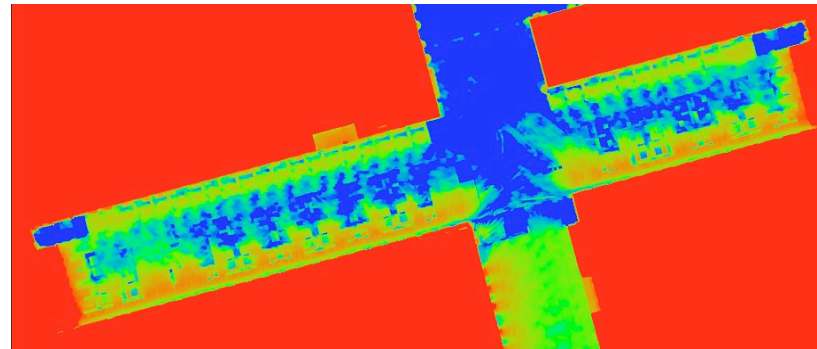


# Construction Documents

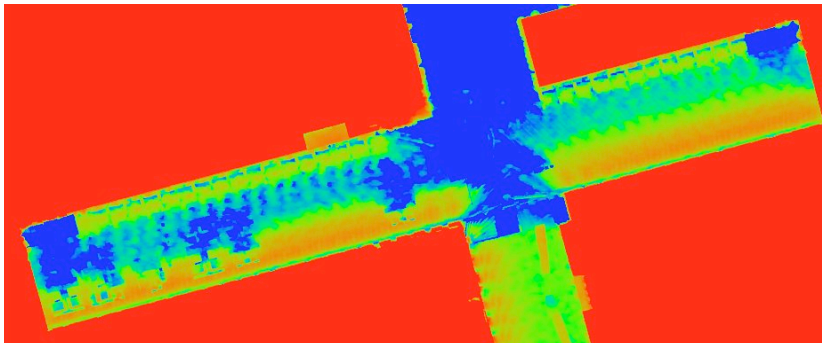
## Lighting Control Zones



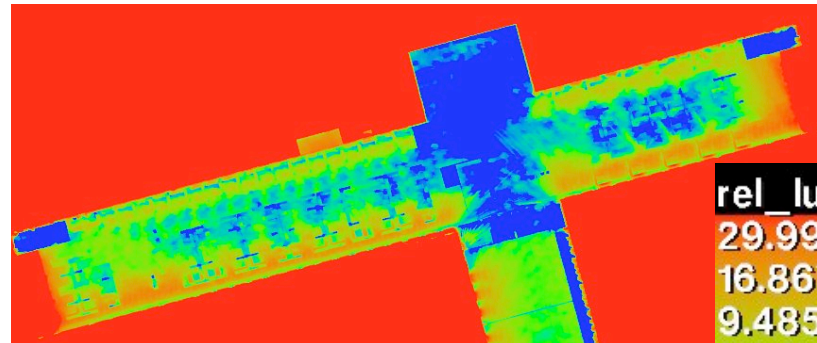
First Floor



Third Floor



Second Floor



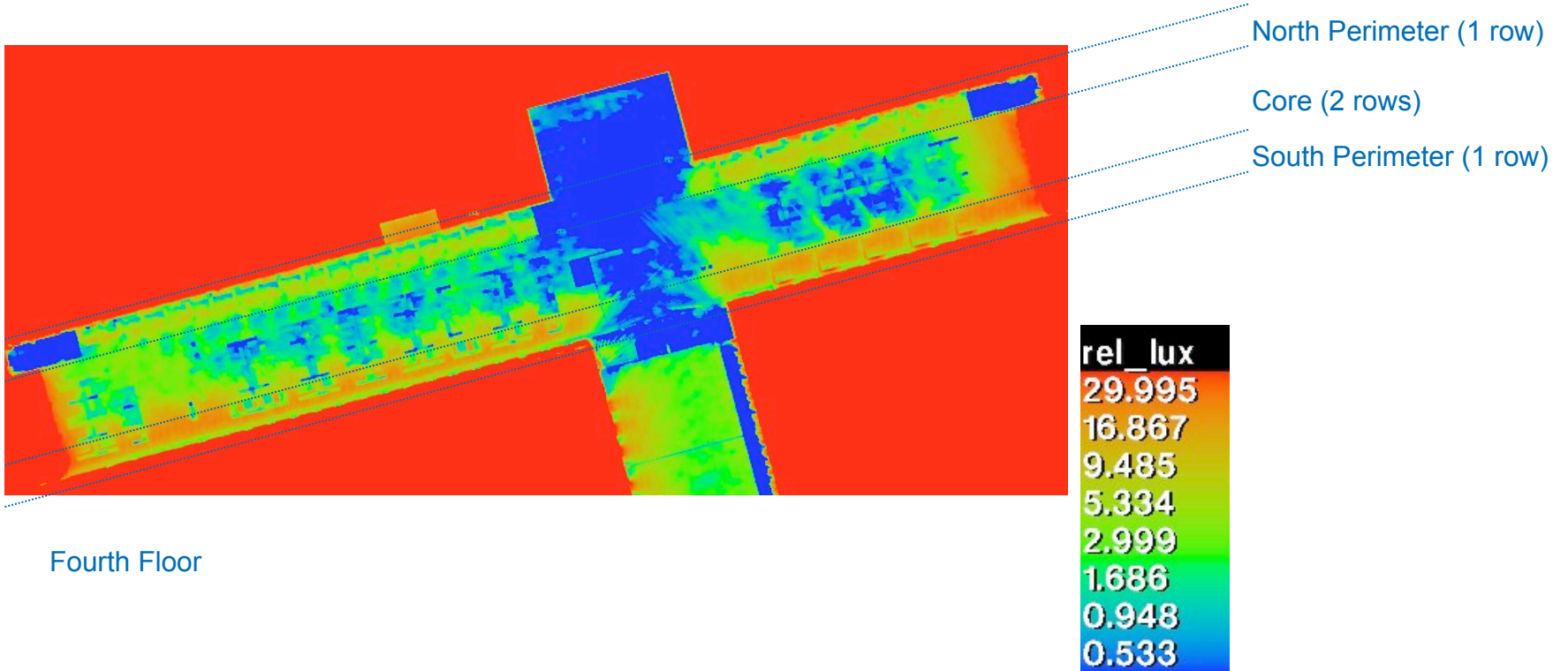
Fourth Floor



Annual Daylight Availability – North Wing

# Construction Documents

## Lighting Control Zones – East-West

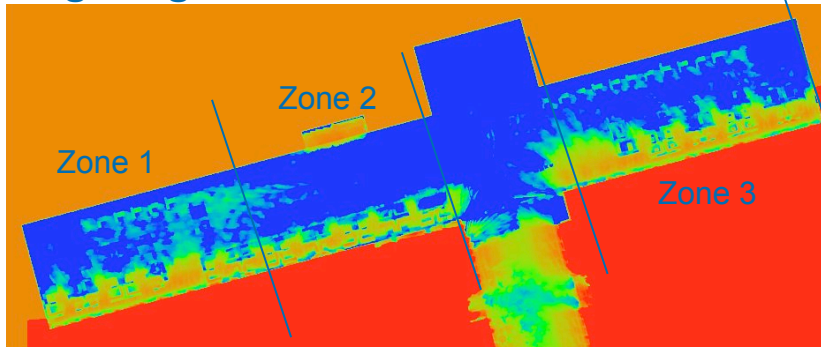


## Annual Daylight Availability – North Wing

# Construction Documents

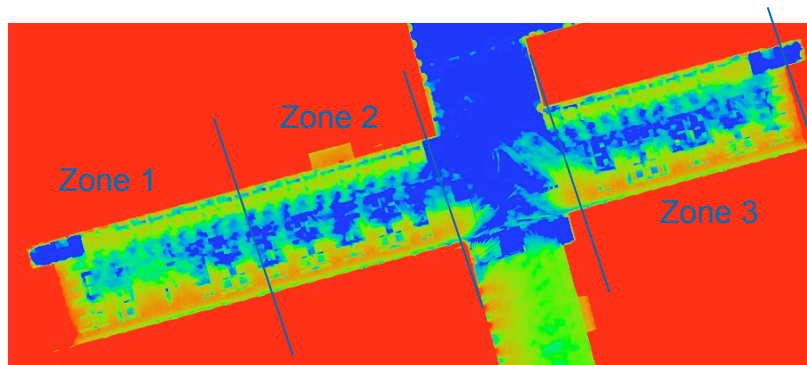
---

## Lighting Control Zones – North-South



First Floor

Applied to Floors 1 & 2 in energy model



Third Floor

Applied to Floors 3 & 4 in energy model

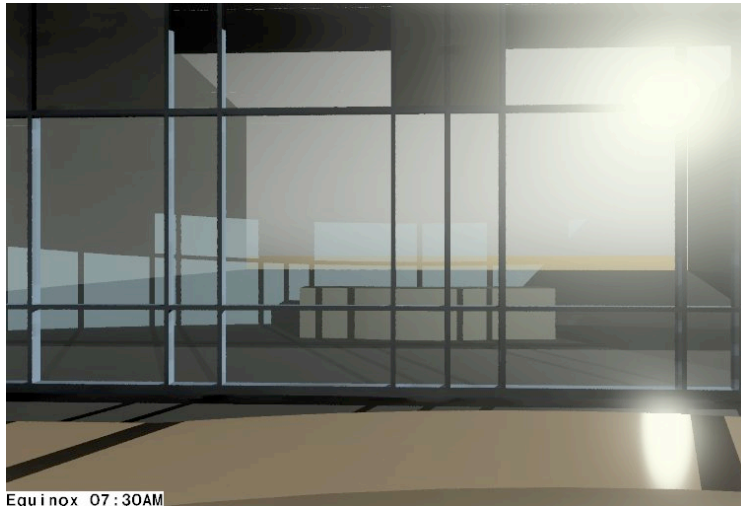
## Annual Daylight Availability – North Wing

# Additional Visualizations

---

## Desk Placement Glare Issue

- Repositioned Reception Desk



**Original View; Equinox, 7:30 a.m.**



**Relocated Desk View; Equinox, 7:30 a.m.**



# Additional Visualizations

---



**2<sup>nd</sup> Floor Conference Room, Summer, 3:00 p.m.**

# Additional Visualizations

---



**Café in Afternoon**

# Additional Visualizations

---

Sunshade Ineffective due to open sides/top; recommend adding solid sides



**View Without Recommended Sunshade Modification**



**View with Recommended Sunshade Modification**

# Thank You